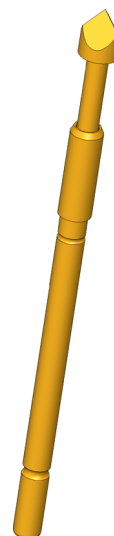
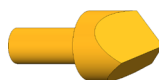


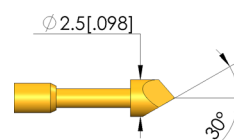
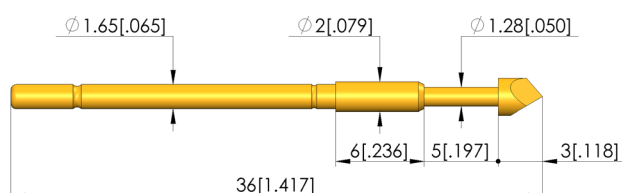


GO TO PRODUCT

- Robust test probes with distinctive collar (stop) on the barrel
- Optimum adjustment of the stroke ratios in the test fixture: The collar is available in different heights, which, in combination with the receptacles, allows a range of installation heights
- Version with central beading ensure low wobble for contacting small test points
- Stainless steel versions for temperatures from -100 °C up to +200 °C available



1:1



### General data

Product group:  
Sub-product group:  
Series:  
Grid:  
Contacting from:  
Magnetic:  
Installation type:  
Quick-exchange system:  
Adjustable installation height:  
Non-rotating:  
Compatible receptacle(s):  
Min. temperature:  
Max. temperature:  
RoHS-compliant:

ICT / FCT (in-circuit test and function test)  
Metric standard  
GKS-912  
3 mm [118 mil]  
Via  
Yes  
Plug-in  
Yes  
No  
No  
KS-112  
-40 °C [-40 °F]  
80 °C [176 °F]  
Yes

### Tip style data

Tip style:  
Tip diameter:  
Tip style surface:  
Tip style material:

07 90° 3-edged chisel, self-cleaning  
2.5 mm [.098 in]  
A gold  
2 steel

### Electrical data

Current load capacity / rated current:  
Typical resistance (Ri):

5 A  
20 mOhm

### Mechanical data

Total length:  
Barrel diameter:  
Maximum stroke:  
Spring pre-load:  
Collar height:  
Spring force at working stroke:  
Recommended working stroke:

36 mm [1.41 in]  
1.66 mm [.065 in]  
5 mm [.196 in]  
0.5 N [1.79 ozf]  
06  
1.5 N [5.39 ozf]  
4 mm [.157 in]

# Test Probe

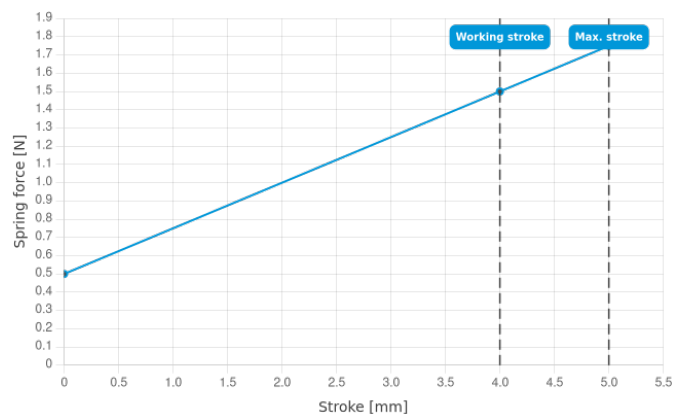
## GKS-912 207 250 A 1506

Item GKS-912-0987



**ingun**<sup>®</sup>

Partner for Future Technology



### INGUN Prüfmittelbau GmbH

Max-Stromeyer-Straße 162  
78467, Constance, Germany  
Phone +49 7531 8105-0  
Customer hotline +49 7531 8105-888  
Fax +49 7531 8105-65  
info@ingun.com



Prices and delivery times on request.  
Technical changes reserved. 12/25\_GB

Learn more about  
ICT/FCT Test probes



ICT/FCT TEST PROBES

ingun.com