

# Signal line strand

## SLL-CK-AWG26-SW-700

Item 43373



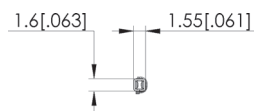
**ingun**<sup>®</sup>

Partner for Future Technology

- Stranded wire with crimp connection for 10-pole/17-pole connector housing
- Consistently stable signal quality throughout
- Flexible stranded wire for the greatest possible freedom of movement
- Crimp connection with internal stop and contact blade which ensures secure clamping with high retention force

### Application

The stranded wire is used for low-wear, quick-connect mating of connector housings without tools.



### General data

Product group:	Electric accessory
Series:	SLL
Type:	Stranded wire
Version:	Crimp connection
Accessory type:	Customising accessories
Scope of delivery:	Pre-wired
Material:	Copper stranded wire, zinc plated
Colour:	Black
Min. temperature:	-20 °C [-4 °F]
Max. temperature:	80 °C [176 °F]
RoHS-compliant:	Yes

### Electrical data

Typical resistance (Ri) of one GKS:	85 mOhm
-------------------------------------	---------

### Compatible with

Accessories:	STV-BL17-F-C
--------------	--------------

### Technical data

Connection:	Plug / solder / crimp connection
Force:	2 N [7.19 ozf]
Max. current:	3.6 A
Max. voltage:	250 V
Installation grid:	2.54 mm [.1 in]
Diameter:	AWG26 mm
Cable length:	700 mm [27.5 in]

# Signal line strand

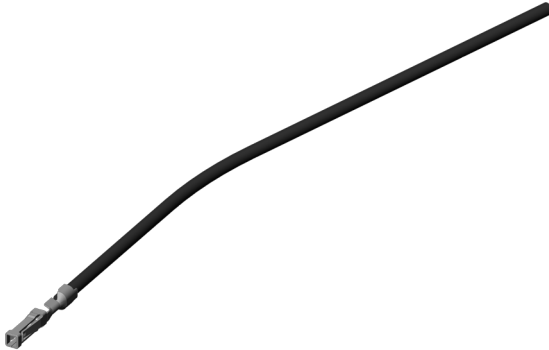
## SLL-CK-AWG26-SW-700

Item 43373



**ingun**<sup>®</sup>

Partner for Future Technology



### Accessories

Part no.	Designation	Version	Assembly
Connector housing			
43377	STV-BL10-F-C	1 row, 10 free slots, grid 2.54 mm	unloaded
115189	STV-BL17-F-C	1 row, 17 free slots, grid 2.54 mm	unloaded

### INGUN Prüfmittelbau GmbH

Max-Stromeyer-Straße 162  
78467, Constance, Germany  
Phone +49 7531 8105-0  
Customer hotline +49 7531 8105-888  
Fax +49 7531 8105-65  
info@ingun.com



Prices and delivery times on request.  
Technical changes reserved. 11/25\_GB