

Insertion Tool GS-810 SW 3.5

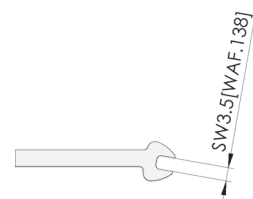
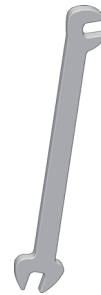
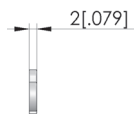
Item GS-810SW3.5



GO TO PRODUCT

ingun®

Partner for Future Technology



General data

| | |
|----------------------------|------------------|
| Product group: | jaw spanner (GS) |
| Series: | GS |
| Tool for receptacle (KS): | No |
| Tool for test probe (GKS): | Yes |
| Tool version: | Rigid |
| RoHS-compliant: | Yes |

INGUN Prüfmittelbau GmbH

Max-Stromeyer-Straße 162
78467, Constance, Germany
Phone +49 7531 8105-0
Customer hotline +49 7531 8105-888
Fax +49 7531 8105-65
info@ingun.com



Prices and delivery times on request.
Technical changes reserved. 03/26_GB

Learn more about
Tool



ingun.com