

Receptacle KS-113 30 M2

Item KS-11330M2



GO TO PRODUCT

ingun®

Partner for Future Technology

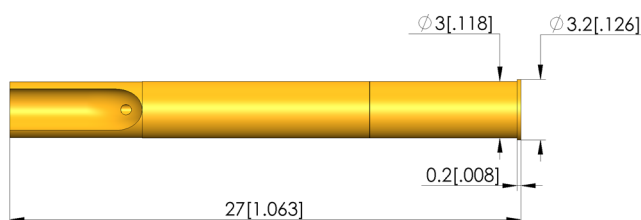
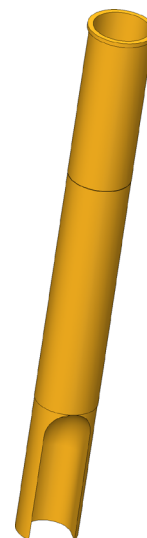
Kontaktsteckhülsen

Mit Gewinde zum Einpressen in das Trägermaterial

INGUN SELECTION

Note:

The receptacle contains an axial bore for leakage testing. This can be closed by soldering on a cable. The receptacle is vacuum-tight after the soldering process. Caution: If handled incorrectly, solder can reach the inner surface of the receptacle.



General data

Product group:
Series:
Sub-series:
Type of receptacle connection:
Press ring:
Surface area:
Collar diameter:
Collar height:
Knurl:
Vacuum-tight:
RoHS-compliant:

Receptacles (KS)
KS-113
KS-113 M screw-in version
Solder
No
Gold
3.2 mm [.125 in]
0.2 mm [.007 in]
No
No
Yes

Mechanical data

Total length: 27 mm [1.06 in]
Outer diameter: 3 mm [.118 in]

Mounting hole

Mounting hole in CEM1: 2.99 mm [.117 in]
Mounting hole in FR4: 2.99 mm [.117 in]

INGUN Prüfmittelbau GmbH

Max-Stromeyer-Straße 162
78467, Constance, Germany
Phone +49 7531 8105-0
Customer hotline +49 7531 8105-888
Fax +49 7531 8105-65
info@ingun.com



Prices and delivery times on request.
Technical changes reserved. 03/26_GB

Learn more about
Test probes

