

# Push rod

## NHS-ST-34,0-2,5-POM-AL

Item 28785



GO TO PRODUCT

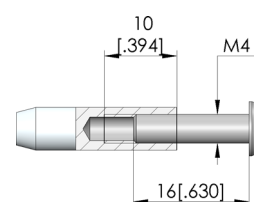
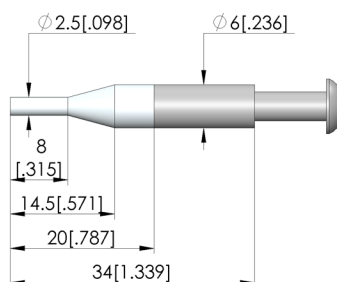
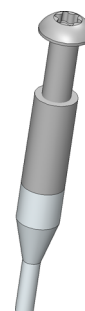
**ingun**<sup>®</sup>

Partner for Future Technology

- Trusted push rods for reliable, rigid fixing of the PCB in the probe field against the force of the test probes
- Robust, pressure-resistant design
- Quick, easy installation

### Application

Push rods (NHS) are used in customisations to securely hold electronic circuit boards in place against the force of the test probes during contacting in the test fixture. Push rods are mounted in the pressure frame plate.



### General data

Product group:  
Series:  
Type:  
Version:  
Accessory type:  
Outer dimensions (TxL):  
Colour:  
RoHS-compliant:

Push rods (NHS)  
NHS-ST  
Rigid  
Not ESD compliant  
Customising accessories  
6 x 34 mm [.236 x 1.33 in]  
Untreated  
Yes

### Technical data

Tip diameter:  
Pushrod shaft diameter:  
Tip material:  
Shaft material:  
True running:  
Installation:  
Thread:  
Tip length:

2.5 mm [.098 in]  
6 mm [.236 in]  
POM  
AL  
Screwed in  
M4x10 mm  
20 mm [.787 in]

### Mechanical data

Total length: 34 mm [1.33 in]



### INGUN Prüfmittelbau GmbH

Max-Stromeyer-Straße 162  
78467, Constance, Germany  
Phone +49 7531 8105-0  
Customer hotline +49 7531 8105-888  
Fax +49 7531 8105-65  
info@ingun.com



Prices and delivery times on request.  
Technical changes reserved. 11/25\_GB