

Insertion Tool GS-810 SW 4.0

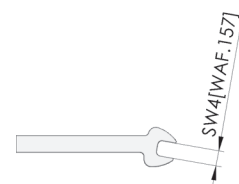
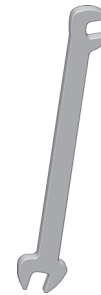
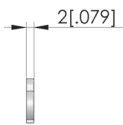
Item GS-810SW4.0



GO TO PRODUCT

ingun[®]

Partner for Future Technology



General data

Product group:	jaw spanner (GS)
Series:	GS
Tool for receptacle (KS):	No
Tool for test probe (GKS):	Yes
Tool version:	Rigid
RoHS-compliant:	Yes

INGUN Prüfmittelbau GmbH

Max-Stromeyer-Straße 162
78467, Constance, Germany
Phone +49 7531 8105-0
Customer hotline +49 7531 8105-888
Fax +49 7531 8105-65
info@ingun.com



Prices and delivery times on request.
Technical changes reserved. 03/26_GB

Learn more about
Tool



ingun.com