

# Battery contacting probe

## BCP-655 360 1800 A 100004M-53

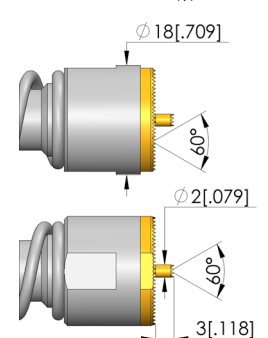
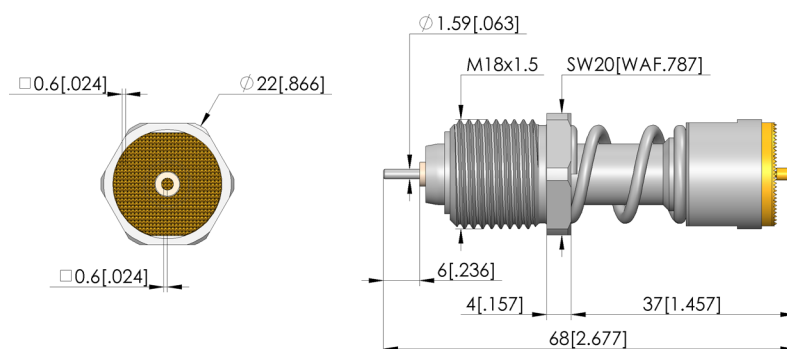
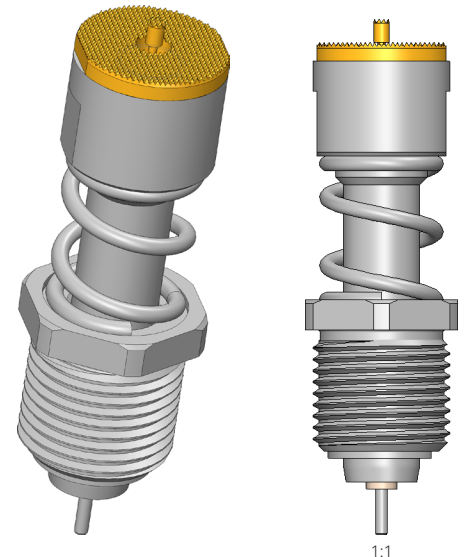
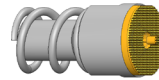
Item BCP-655-0003



**ingun**<sup>®</sup>

Partner for Future Technology

- Contact solution for 4680 cylindrical cells and prismatic cells
- Suitable for currents up to 125 A at  $\Delta T \leq 20$  K on aluminium
- Low-impedance probe with typical total resistance  $< 0.5$  mOhm
- Designed for a wide range of applications, especially for formation and other end-of-life (EOL) tests
- Fixed cable connection
- Easy installation via threaded connection, secure hold in busbar
- Dipole design for precise voltage measurement
- Easy connection of the voltage sensor: both soldering and cable lug installation possible



### General data

|                                 |                           |
|---------------------------------|---------------------------|
| Screw-in torque max.:           | 2,000 cNm [177 lbf-in]    |
| Product group:                  | Dipole BCP / 4-wire clamp |
| Sub-product group:              | Dipole BCP / 4-wire clamp |
| Series:                         | BCP-655 M screw-in        |
| Grid:                           | 30 mm [1,181 mil]         |
| Magnetic:                       | Yes                       |
| Installation type:              | Screw-in                  |
| Quick-exchange system:          | No                        |
| Type of test probe connection:  | Thread connection         |
| Adjustable installation height: | No                        |
| Non-rotating:                   | No                        |
| Min. temperature:               | -40 °C [-40 °F]           |
| Max. temperature:               | 80 °C [176 °F]            |
| RoHS-compliant:                 | Yes                       |

### Tip style data

|                     |                         |
|---------------------|-------------------------|
| Tip style:          | 60 serrated, small grid |
| Tip diameter:       | 18 mm [.708 in]         |
| Tip style surface:  | A gold                  |
| Tip style material: | 3 CuBe                  |

### Electrical data

|  |        |
|--|--------|
| Current load capacity / rated current: | 125 A  |
| Typical resistance (Ri):               | 1 mOhm |

### Mechanical data

|                                 |                  |
|---------------------------------|------------------|
| Total length:                   | 68 mm [2.67 in]  |
| Barrel diameter:                | 18 mm [.708 in]  |
| Maximum stroke:                 | 7 mm [.275 in]   |
| Spring pre-load:                | 47.6 N [171 ozf] |
| Collar height:                  | 04               |
| Spring force at working stroke: | 100 N [359 ozf]  |
| Recommended working stroke:     | 4.4 mm [.173 in] |

# Battery contacting probe

## BCP-655 360 1800 A 100004M-53

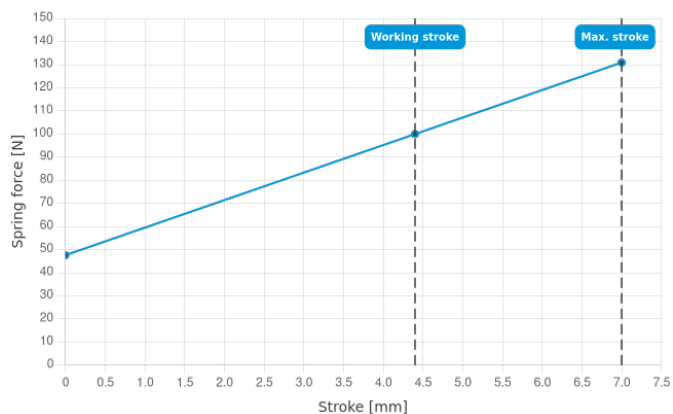
Item BCP-655-0003



GO TO PRODUCT

**ingun**<sup>®</sup>

Partner for Future Technology



### INGUN Prüfmittelbau GmbH

Max-Stromeyer-Straße 162  
78467, Constance, Germany  
Phone +49 7531 8105-0  
Customer hotline +49 7531 8105-888  
Fax +49 7531 8105-65  
info@ingun.com



Prices and delivery times on request.  
Technical changes reserved. 12/25\_GB

Learn more about  
Test probes

