

High-current test probe

HSS-120 303 300 A 1502

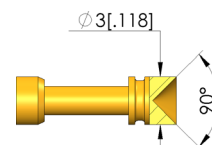
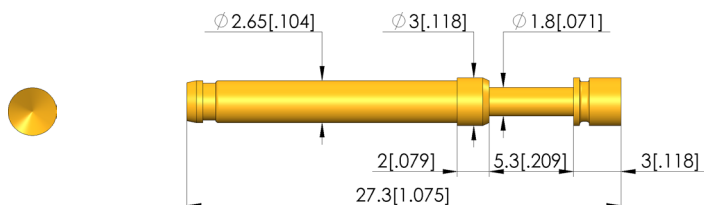
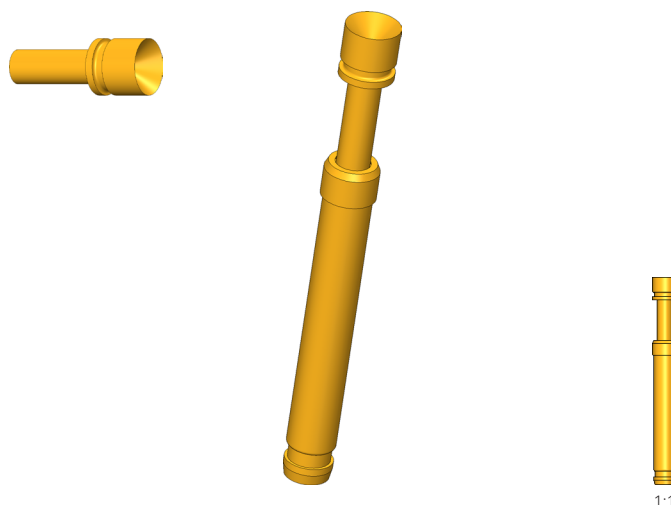
Item HSS-120-0013



ingun[®]

Partner for Future Technology

- Trusted, robust high-current probes, optimally sized for current load capacity ratio
- Low-Ohm probe with Ri typical: < 10 mOhm
- For use in function and burn-in tests
- Large selection of tip styles and spring forces for optimum contact with DUT
- Optimum adjustment of the stroke ratios in the test fixture: The test probe collar is available in different heights, which, in combination with the receptacles, allows a range of installation heights



General data

| | |
|---------------------------------|-------------------------|
| Product group: | Standard HSS (press-in) |
| Sub-product group: | Standard HSS (press-in) |
| Series: | HSS-120 |
| Grid: | 4 mm [157 mil] |
| Contacting from: | Post |
| Magnetic: | Yes |
| Installation type: | Plug-in |
| Quick-exchange system: | Yes |
| Adjustable installation height: | No |
| Non-rotating: | No |
| Compatible receptacle(s): | KS-113 |
| Min. temperature: | -100 °C [-148 °F] |
| Max. temperature: | 200 °C [392 °F] |
| RoHS-compliant: | Yes |

Tip style data

| | |
|---------------------|-----------------|
| Tip style: | 03 inverse cone |
| Tip diameter: | 3 mm [.118 in] |
| Tip style surface: | A gold |
| Tip style material: | 3 CuBe |

Electrical data

| | |
|--|---------|
| Current load capacity / rated current: | 30 A |
| Typical resistance (Ri): | 10 mOhm |

Mechanical data

| | |
|---------------------------------|-------------------|
| Total length: | 27.3 mm [1.07 in] |
| Barrel diameter: | 2.65 mm [.104 in] |
| Maximum stroke: | 5.3 mm [.208 in] |
| Spring pre-load: | 0.39 N [1.4 ozf] |
| Collar height: | 2 |
| Spring force at working stroke: | 1.5 N [5.39 ozf] |
| Recommended working stroke: | 4 mm [.157 in] |

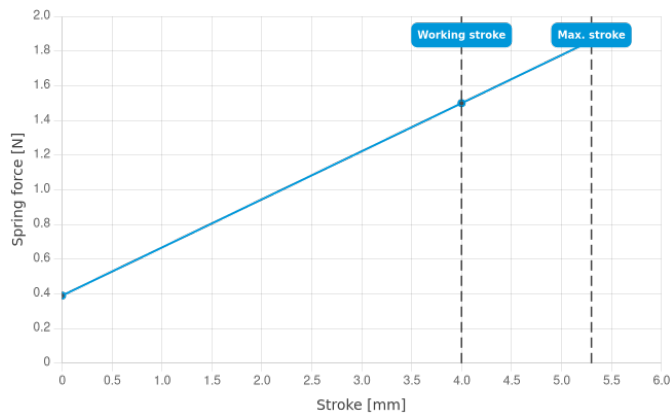
High-current test probe HSS-120 303 300 A 1502

Item HSS-120-0013



ingun[®]

Partner for Future Technology



INGUN Prüfmittelbau GmbH

Max-Stromeyer-Straße 162
78467, Constance, Germany
Phone +49 7531 8105-0
Customer hotline +49 7531 8105-888
Fax +49 7531 8105-65
info@ingun.com



Prices and delivery times on request.
Technical changes reserved. 11/25_GB

Learn more about
High-current test probes



ingun.com

HIGH-CURRENT TEST PROBES