

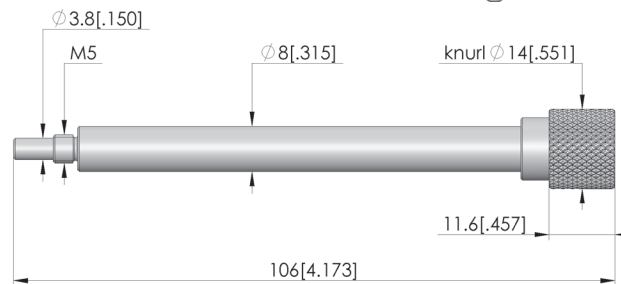
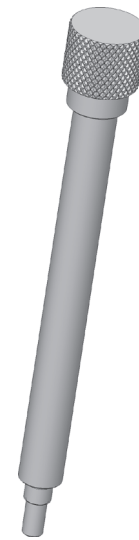


GO TO PRODUCT

- Secure screw connection of pressure frame unit (NDH) replacement kit and probe plate unit (KTE) replacement kit to form a single unit
- Quick, easy transport and storage of the integrated exchangeable kit
- Screwed unit with protected probe field

Application

Stacking screws are used to connect the pressure frame unit (NDH) replacement kit and probe plate unit (KTE) replacement kit to form a single unit with a protected probe field.



General data

Product group:
Series:
Type:
Version:
Accessory type:
Material:
Weight:
Min. temperature:
Max. temperature:
RoHS-compliant:

Mechanical accessory
MSS
Standard exchangeable kits (ATS)
Customising accessories
3.3206
0.02 kg [.044 lbs]
10 °C [50 °F]
60 °C [140 °F]
Yes

Compatible with

Exchangeable kits version:
MA exchangeable kits (ATS MA):

No RF
ATS MAXx

Technical data

Installation:
Length:
Diameter:

Thread M5
106 mm [4.17 in]
14 mm [.551 in]

INGUN Prüfmittelbau GmbH

Max-Stromeyer-Straße 162
78467, Constance, Germany
Phone +49 7531 8105-0
Customer hotline +49 7531 8105-888
Fax +49 7531 8105-65
info@ingun.com

