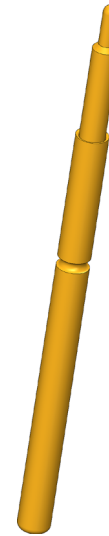
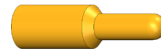


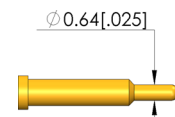
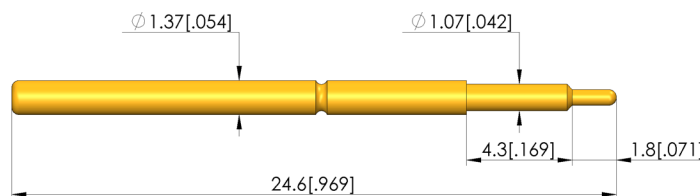


GO TO PRODUCT

- Robust, compact design for harsh ICT/FCT applications with limited space
- For optimum contact at the test points (e.g. pads, vias, and pins), various tip styles in different diameters and finishes, as well as various spring forces are available. spring forces.



1:1



General data

Product group: ICT / FCT (in-circuit test and function test)
 Sub-product group: Short/robust GKS
 Series: GKS-002
 Grid: 2.54 mm [100 mil]
 Contacting from: Pad
 Magnetic: Yes
 Installation type: Plug-in
 Quick-exchange system: Yes
 Adjustable installation height: No
 Non-rotating: No
 Compatible receptacle(s): KS-002
 Min. temperature: -40 °C [-40 °F]
 Max. temperature: 80 °C [176 °F]
 RoHS-compliant: Yes

Product group: ICT / FCT (in-circuit test and function test)
 Sub-product group: Short/robust GKS
 Series: GKS-002
 Grid: 2.54 mm [100 mil]
 Contacting from: Pad
 Magnetic: Yes
 Installation type: Plug-in
 Quick-exchange system: Yes
 Adjustable installation height: No
 Non-rotating: No
 Compatible receptacle(s): KS-002
 Min. temperature: -40 °C [-40 °F]
 Max. temperature: 80 °C [176 °F]
 RoHS-compliant: Yes

Tip style data

Tip style: 05 bullet-nosed (full radius)
 Tip diameter: 0.64 mm [.025 in]
 Tip style surface: A gold
 Tip style material: 3 CuBe

Tip style: 05 bullet-nosed (full radius)
 Tip diameter: 0.64 mm [.025 in]
 Tip style surface: A gold
 Tip style material: 3 CuBe

Electrical data

Current load capacity / rated current: 8 A
 Typical resistance (Ri): 20 mOhm

Current load capacity / rated current: 8 A
 Typical resistance (Ri): 20 mOhm

Mechanical data

Total length: 24.6 mm [.968 in]
 Barrel diameter: 1.37 mm [.053 in]
 Maximum stroke: 4.1 mm [.161 in]
 Spring pre-load: 1.08 N [3.88 ozf]
 Collar height: 00
 Spring force at working stroke: 1.8 N [6.47 ozf]
 Recommended working stroke: 2.7 mm [.106 in]

Test Probe

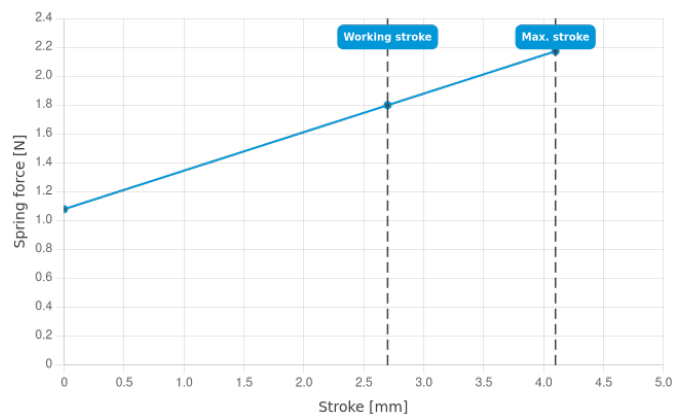
GKS-002 305 064 A 1800

Item GKS-002-0017



ingun[®]

Partner for Future Technology



INGUN Prüfmittelbau GmbH

Max-Stromeyer-Straße 162
78467, Constance, Germany
Phone +49 7531 8105-0
Customer hotline +49 7531 8105-888
Fax +49 7531 8105-65
info@ingun.com



Prices and delivery times on request.
Technical changes reserved. 11/25_GB

Learn more about
ICT/FCT Test probes



[ingun.com](https://www.ingun.com)

ICT/FCT TEST PROBES