

High-current test probe

HSS-003 305 254 S 3000

Item HSS-003-0001

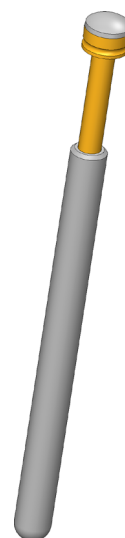
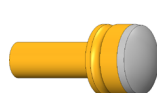


GO TO PRODUCT

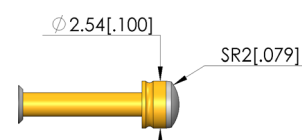
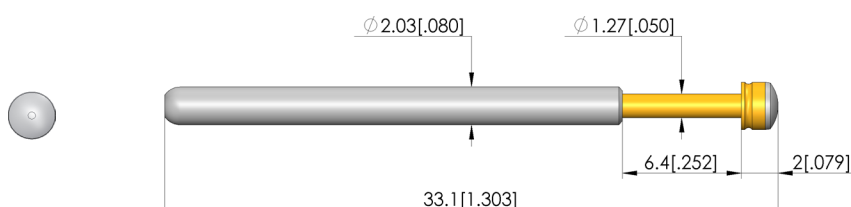
ingun[®]

Partner for Future Technology

- Trusted, robust high-current probes, optimally sized for current load capacity ratio
- Low-Ohm probe with Ri typical: < 10 mOhm
- For use in function and burn-in tests
- Large selection of tip styles and spring forces for optimum contact with DUT
- Optimum adjustment of the stroke ratios in the test fixture: The test probe collar is available in different heights, which, in combination with the receptacles, allows a range of installation heights



1:1



General data

Product group:	International standard HSS
Sub-product group:	International standard HSS
Series:	HSS-003
Grid:	3.18 mm [125 mil]
Contacting from:	Pad
Magnetic:	Yes
Installation type:	Plug-in
Quick-exchange system:	Yes
Adjustable installation height:	No
Non-rotating:	No
Compatible receptacle(s):	KS-003
Min. temperature:	-100 °C [-148 °F]
Max. temperature:	200 °C [392 °F]
RoHS-compliant:	Yes

Tip style data

Tip style:	05 bullet-nosed (full radius)
Tip diameter:	2.54 mm [.1 in]
Tip style surface:	S silver
Tip style material:	3 CuBe

Electrical data

Current load capacity / rated current:	27 A
Typical resistance (Ri):	10 mOhm

Mechanical data

Total length:	33.1 mm [1.3 in]
Barrel diameter:	2.03 mm [.079 in]
Maximum stroke:	6.35 mm [.25 in]
Spring pre-load:	0.8 N [2.87 ozf]
Collar height:	00
Spring force at working stroke:	3 N [10.7 ozf]
Recommended working stroke:	4.4 mm [.173 in]

HIGH-CURRENT TEST PROBES

High-current test probe

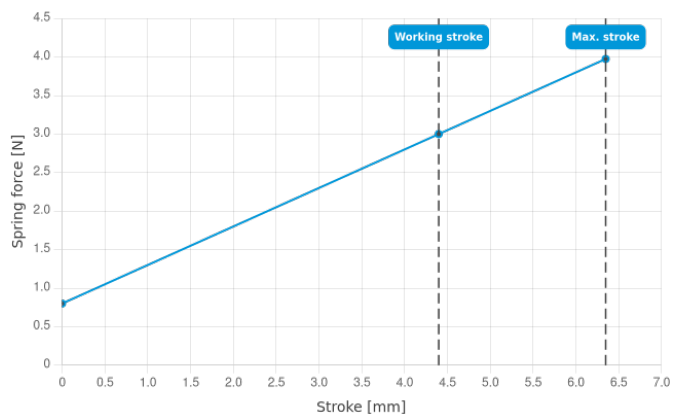
HSS-003 305 254 S 3000

Item HSS-003-0001



ingun[®]

Partner for Future Technology



INGUN Prüfmittelbau GmbH

Max-Stromeyer-Straße 162
78467, Constance, Germany
Phone +49 7531 8105-0
Customer hotline +49 7531 8105-888
Fax +49 7531 8105-65
info@ingun.com



Prices and delivery times on request.
Technical changes reserved. 12/25_GB

Learn more about
High-current test probes



ingun.com

HIGH-CURRENT TEST PROBES