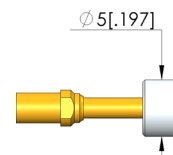
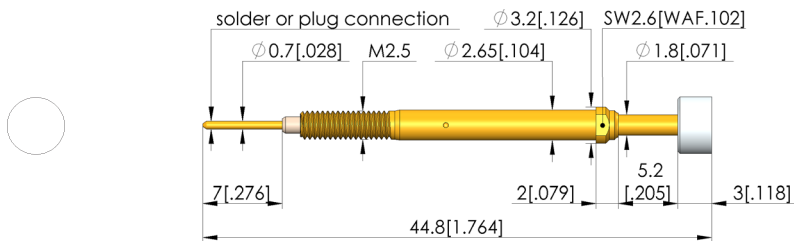
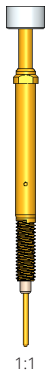
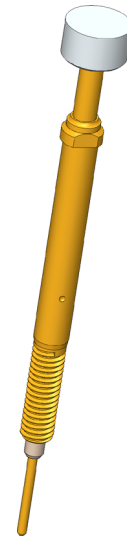
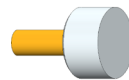




## Anwesenheitsprüfung

Zur Überprüfung der Anwesenheit des Steckers, Steckerbauteilen und der Kontaktterminals

- For a wide range of applications: performs components detection check, is a switch for detecting closed/open states, and a signal transmitter for process control
- Various collar heights are available on the receptacles to adjust the installation height
- The installation height can be varied, and the position of the switching point can be precisely adjusted via the probe's thread. The SKS is secured in the correct position by crimp point in the KS.
- The electrical connection is ensured by installation using a receptacle, optionally available with a quick-change system for easy exchange during maintenance



# Switching Probe (NO)

## SKS-465 002 500 A 3502 MF

Item SKS-465-0264



GO TO PRODUCT

# ingun®

Partner for Future Technology

### General data

Screw-in torque max.:	5 cNm [.442 lbf-in]
Product group:	SKS (screwed-in)
Sub-product group:	SKS (screwed-in)
Series:	SKS-465
Grid:	5.5 mm [216 mil]
Contacting from:	Presence check
Magnetic:	Yes
Installation type:	Screw-in
Quick-exchange system:	Yes
Type of test probe connection:	Plug
Adjustable installation height:	Yes
Non-rotating:	No
Screw-in torque:	3 – 5 cNm [.265 – .442 lbf-in]
Compatible connector(s):	SE-215
Compatible receptacle(s):	KS-465 M
Min. temperature:	-40 °C [-40 °F]
Max. temperature:	80 °C [176 °F]
RoHS-compliant:	Yes

### Tip style data

Tip style:	002 flat, contact surface insulated
Tip diameter:	5 mm [.196 in]
Tip style surface:	A gold
Tip style material:	0 plastic

### Electrical data

Current load capacity / rated current:	3 A
--	-----

### Mechanical data

Total length:	44.8 mm [1.76 in]
Barrel diameter:	2.65 mm [.104 in]
Maximum stroke:	5.2 mm [.204 in]
Spring pre-load:	1.02 N [3.66 ozf]
Collar height:	02
Switch path:	1.7 mm [.066 in]
Switching point:	8.5 mm [.334 in]
Spring force at switching point:	1.8 N [6.47 ozf]

### INGUN Prüfmittelbau GmbH

Max-Stromeyer-Straße 162  
78467, Constance, Germany  
Phone +49 7531 8105-0  
Customer hotline +49 7531 8105-888  
Fax +49 7531 8105-65  
info@ingun.com



Prices and delivery times on request.  
Technical changes reserved. 04/26\_GB

Learn more about  
Test probes

