

Push rod

NHS-ST-20,0-4,0-KU-D3-ESD

Item 19315



GO TO PRODUCT

ingun[®]

Partner for Future Technology

- Trusted push rods for reliable, rigid fixing of the PCB in the probe field against the force of the test probes
- Robust, pressure-resistant design
- Quick, easy installation

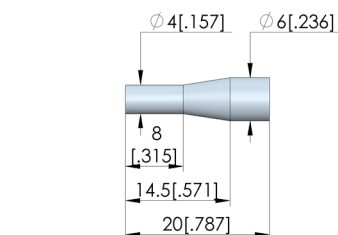
Application

Push rods (NHS) are used in customisations to securely hold electronic circuit boards in place against the force of the test probes during contacting in the test fixture. Push rods are mounted in the pressure frame plate.



General data

Product group:
Series:
Type:
Version:
Accessory type:
Outer dimensions (TxL):
RoHS-compliant:



Push rods (NHS)
NHS-ST
Rigid
ESD (<10⁵)
Customising accessories
6 x 20 mm [0.236 x 0.787 in]
Yes

Mechanical data

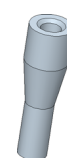
Total length:

20 mm [0.787 in]

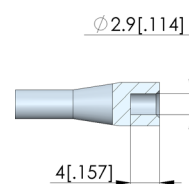
Technical data

Tip diameter:
Tip material:
True running:
Installation:
Thread:
Tip length:

4 mm [0.157 in]
KU
Plugged
Ø 3,0 mm
20 mm [0.787 in]



1:1



INGUN Prüfmittelbau GmbH

Max-Stromeyer-Straße 162
78467, Constance, Germany
Phone +49 7531 8105-0
Customer hotline +49 7531 8105-888
Fax +49 7531 8105-65
info@ingun.com



Prices and delivery times on request.
Technical changes reserved. 11/25_GB