

# Transfer field

## TF-P-SI-020-L

Item 48738



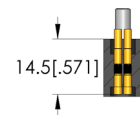
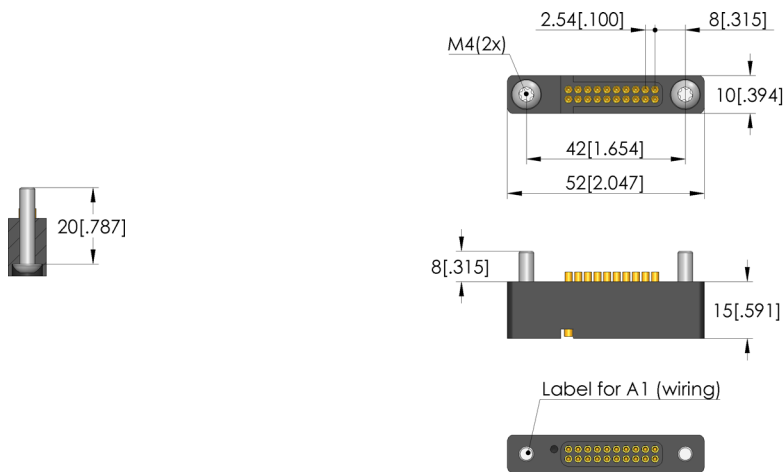
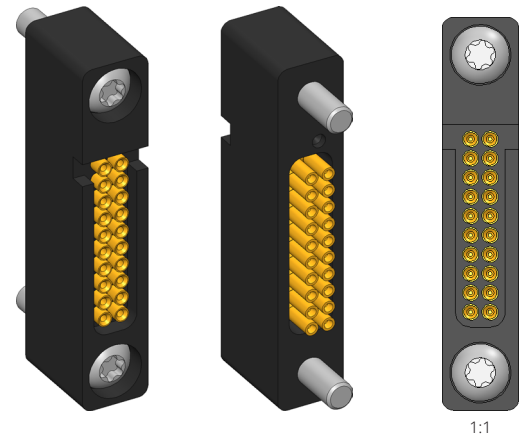
**ingun**<sup>®</sup>

Partner for Future Technology

- Contact module for reliable transmission of signals when contacting from the top side
- Quick, easy, freely adjustable installation
- Equipped with INGUN contact terminals

### Application

Transfer fields (TF) are used as contact modules to reliably transmit signals from top-side contacting. The signal transfer is spring-loaded, with the advantage that the exchangeable kit can be exchanged quickly and easily in interchangeable kit test fixtures without having to disconnect the wiring to the DUT. Transfer fields are typically mounted on the pressure-frame plate.



### General data

Product group:  
Series:  
Type:  
Version:  
Accessory type:  
Scope of delivery:  
Width:  
Height:  
Weight:  
Min. temperature:  
Max. temperature:  
RoHS-compliant:

Transfer fields  
TF-SI

Device under test (DUT) side  
Customising accessories  
Fully loaded with KT-254 L3 E02  
10 mm [.393 in]  
15 mm [.59 in]  
0.02 kg [.044 lbs]  
10 °C [50 °F]  
60 °C [140 °F]  
Yes

### Compatible with

Exchangeable kits version:  
MA exchangeable kits (ATS MA);  
For dual-stage contacting:

No limitations  
ATS MAxx  
Yes

### Technical data

Connection:  
Number of poles:  
Installation grid:  
Length:  
Outer dimensionS (WxDxH):

Solder connection  
20  
2.54 mm [.1 in]  
52 mm [2.04 in]  
52 x 10 x 15 mm [2.04 x .393 x .59 in]

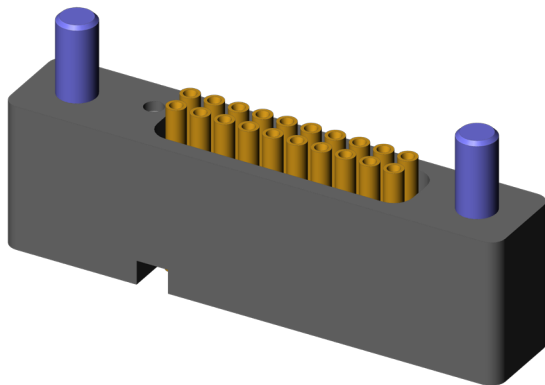
Transfer field  
**TF-P-SI-020-L**

Item 48738



**ingun**<sup>®</sup>

Partner for Future Technology



**INGUN Prüfmittelbau GmbH**

Max-Stromeyer-Straße 162  
78467, Constance, Germany  
Phone +49 7531 8105-0  
Customer hotline +49 7531 8105-888  
Fax +49 7531 8105-65  
[info@ingun.com](mailto:info@ingun.com)



Prices and delivery times on request.  
Technical changes reserved. 11/25\_GB