

Switching Probe (NO)

SKS-419 005 300 A 6508

Item SKS-419-0001

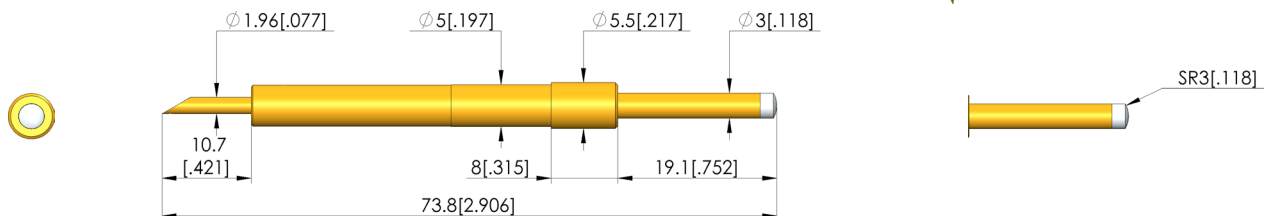
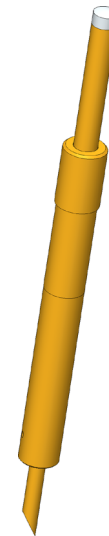


GO TO PRODUCT

ingun[®]

Partner for Future Technology

- For a wide range of applications: performs components detection check, is a switch for detecting closed/open states, and a signal transmitter for process control
- The electrical connection is ensured by installation using a receptacle
- Designed as normally open (NO), i.e. The circuit is closed when actuated



General data

Product group:	SKS (pressed-in)
Sub-product group:	SKS (pressed-in)
Series:	SKS-419
Grid:	7.5 mm [295 mil]
Contacting from:	Presence check
Magnetic:	Yes
Installation type:	Plug-in
Quick-exchange system:	No
Type of test probe connection:	Solder connection
Adjustable installation height:	No
Non-rotating:	No
Compatible receptacle(s):	KS-419
Min. temperature:	-40 °C [-40 °F]
Max. temperature:	80 °C [176 °F]
RoHS-compliant:	Yes

Tip style data

Tip style:	005 round, contact surface insulated
Tip diameter:	3 mm [.118 in]
Tip style surface:	A gold
Tip style material:	0 plastic

Electrical data

Current load capacity / rated current:	5 A
--	-----

Mechanical data

Total length:	73.8 mm [2.9 in]
Barrel diameter:	5 mm [.196 in]
Maximum stroke:	14 mm [.551 in]
Spring pre-load:	2.08 N [7.48 ozf]
Collar height:	8
Switch path:	2 mm [.078 in]
Switching point:	25 mm [.984 in]
Spring force at switching point:	2.6 N [9.35 ozf]

INGUN Prüfmittelbau GmbH

Max-Stromeyer-Straße 162
78467, Constance, Germany
Phone +49 7531 8105-0
Customer hotline +49 7531 8105-888
Fax +49 7531 8105-65
info@ingun.com



Prices and delivery times on request.
Technical changes reserved. 11/25_GB

Learn more about
Test probes



ingun.com