

Vacuum test fixture

VA 3060/F/H/GR228x15/15

Item 107713



GO TO PRODUCT

ingun®

Partner for Future Technology

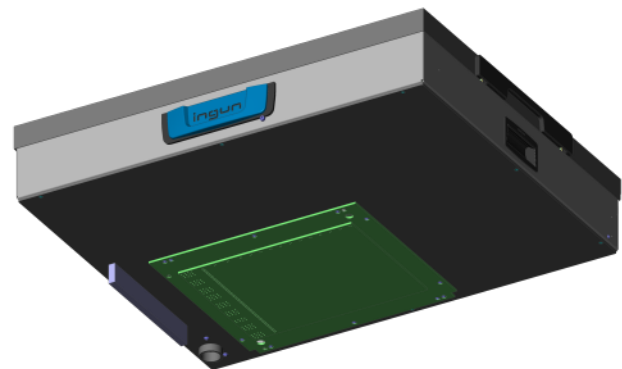
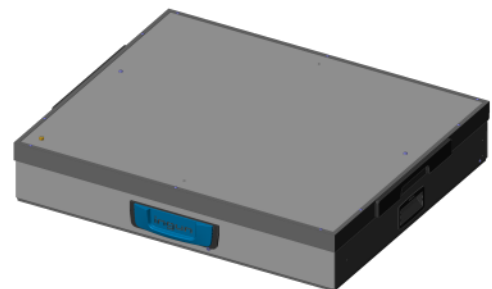
- Vacuum test fixture with parallel closing vacuum cassette for testing large PCB quantities
- Robust, maintenance-friendly design with outstanding service life
- Increased operating convenience without significant closing forces
- Intuitive, easy handling
- Can be modularly expanded to a dual-stage set-up
- Easy access to the interface thanks to hinged cassette
- Detailed accompanying documents (e.g., customising guidelines)

General data

Product group	Vacuum test fixture (VA)
Main series	VA xxxx
Subseries	VA 30xx
Series	VA 3060
Size	xx60
Test fixture type	Stand-alone test fixture
Contact stroke generation	Vacuum
Housing type	Flat housing
Contacting direction	Single-sided (bottom)
Max. contact force	22.000 N [79.1 ozf]
Approx. parallel contact stroke	13 mm [.511 in]
Test system interface	Test station GR 228x 15/15
Min. temperature	+ 10 °C [+ 50 °F]
Max. temperature	+ 60 °C [+ 140 °F]

Technical data

Test probe installation height, bottom	16 mm [.629 in]
Standard version	Yes
Useable area, standard (WxD)	560 x 450 mm [22.0 x 17.7 in]
ESD version	No
Radio frequency version	No
Rigid pin version	No
Dual-stage version	No
Additional contacting unit (ZSK), top	Yes, with suitable additional option
Outer dimensions, closed (WxDxH)	666 x 562 x 125 mm [22.1 x 4.92 in]



INGUN Prüfmittelbau GmbH

Max-Stromeyer-Straße 162
78467, Constance, Germany
Phone +49 7531 8105-0
Customer hotline +49 7531 8105-888
Fax +49 7531 8105-65
info@ingun.com



Prices and delivery times on request.
Technical changes reserved. 08/23 EN

Learn more about
Test fixture kits

