

# Vacuum test fixture

## VA 3040/F/H/GR228x15/15

Item 104279

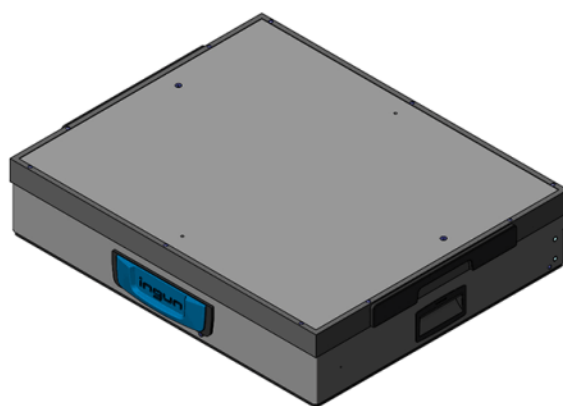


GO TO PRODUCT

ingun®

Partner for Future Technology

- Vacuum test fixture with parallel closing vacuum cassette for testing large PCB quantities
- Robust, maintenance-friendly design with outstanding service life
- Stand-alone test fixtures with and without pre-configured test system interface
- Available for all common test systems
- Increased operating convenience without significant closing forces
- Intuitive, easy handling
- Can be modularly expanded to a dual-stage set-up
- Easy access to the interface thanks to hinged cassette
- Detailed accompanying documents (e.g., customising guidelines)



### General data

Product group	Vacuum test fixture (VA)
Main series	VA xxxx
Subseries	VA 30xx
Series	VA 3040
Size	xx40
Test fixture type	Stand-alone test fixture
Contact stroke generation	Vacuum
Housing type	Flat housing
Contacting direction	Single-sided (bottom)
Max. contact force	14.000 N [50.3 ozf]
Approx. parallel contact stroke	13 mm [.511 in]
Test system interface	Test station GR 228x 15/15
Min. temperature	+ 10 °C [+ 50 °F]
Max. temperature	+ 60 °C [+ 140 °F]

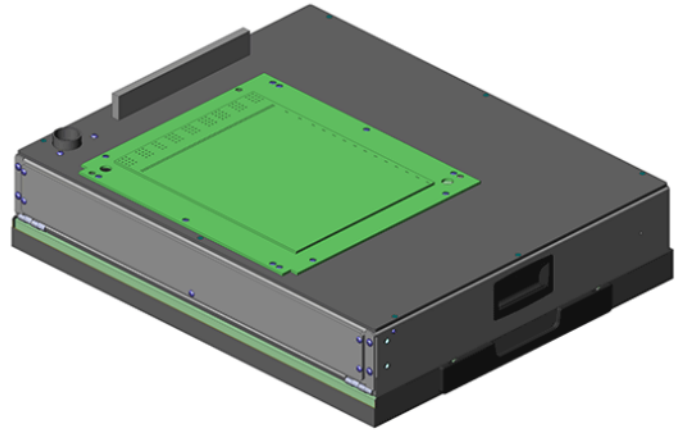
### Technical data

Test probe installation height, bottom	16 mm [.629 in]
Standard version	Yes
Useable area, standard (WxD)	460 x 360 mm [18.1 x 14.1 in]
ESD version	No
Radio frequency version	No
Rigid pin version	No
Dual-stage version	No
Additional contacting unit (ZSK), top	Yes, with suitable additional option
Outer dimensions, closed (WxDxH)	566 x 472 x 125 mm [18.5 x 4.92 in]

Vacuum test fixture  
**VA 3040/F/H/GR228x15/15**  
Item 104279



**ingun**<sup>®</sup>  
Partner for Future Technology



**INGUN Prüfmittelbau GmbH**

Max-Stromeyer-Straße 162  
78467, Constance, Germany  
Phone +49 7531 8105-0  
Customer hotline +49 7531 8105-888  
Fax +49 7531 8105-65  
info@ingun.com



Prices and delivery times on request.  
Technical changes reserved. 08/23 EN

Learn more about  
Test fixture kits

