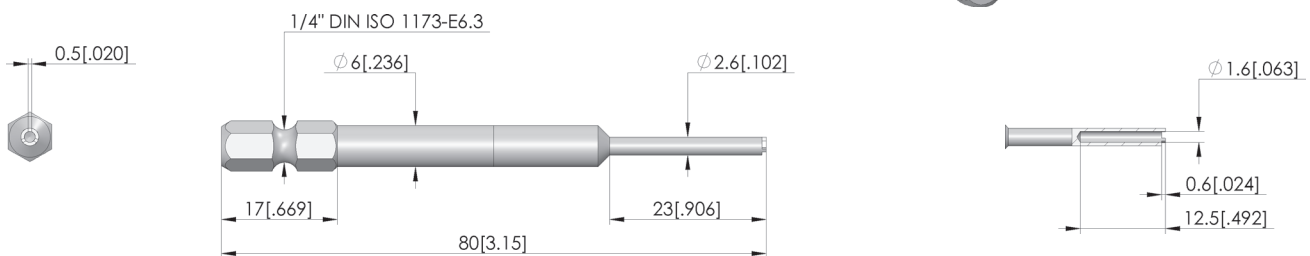
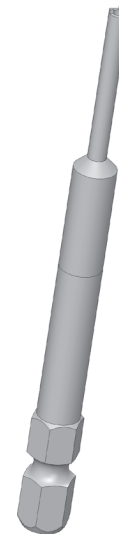




GO TO PRODUCT

## BIT-Werkzeug



### General data

Screw-in torque max.:	20 cNm [1.77 lbf·in]
Product group:	Bit inserts (BIT)
Compatible test probe(s) / receptacle(s):	042 T-888
Series:	BIT-T
Tool for receptacle (KS):	No
Tool for test probe (GKS):	Yes
Test probe installation type:	Screw-in
Min. tip diameter:	0 mm [0 in]
Max. tip diameter:	5 mm [.196 in]
Tool version:	Rigid
Screw-in torque:	10 – 20 cNm [.885 – 1.77 lbf·in]
RoHS-compliant:	Yes

### INGUN Prüfmittelbau GmbH

Max-Stromeyer-Straße 162  
78467, Constance, Germany  
Phone +49 7531 8105-0  
Customer hotline +49 7531 8105-888  
Fax +49 7531 8105-65  
info@ingun.com



Learn more about  
Tool

