

Insertion Tool

BIT-HSS-623 M-600

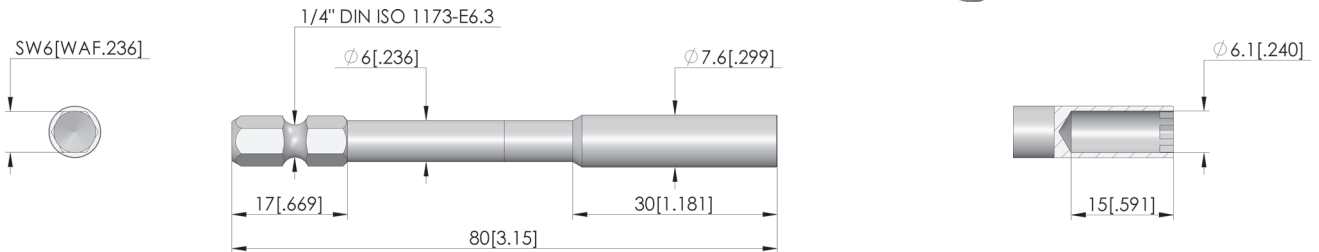
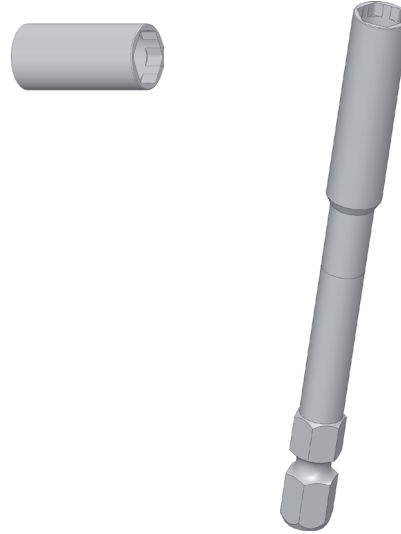
Item BIT-HSS-623M-600



GO TO PRODUCT

ingun[®]

Partner for Future Technology



General data

Screw-in torque max.:	40 cNm [3.54 lbf·in]
Product group:	Bit inserts (BIT)
Compatible test probe(s) / receptacle(s):	HSS-623
Series:	BIT-HSS
Tool for receptacle (KS):	No
Tool for test probe (GKS):	Yes
Test probe installation type:	Screw-in
Min. tip diameter:	0 mm [0 in]
Max. tip diameter:	6 mm [.236 in]
Tool version:	Rigid
Screw-in torque:	40 cNm [3.54 lbf·in]
RoHS-compliant:	Yes

INGUN Prüfmittelbau GmbH

Max-Stromeyer-Straße 162
78467, Constance, Germany
Phone +49 7531 8105-0
Customer hotline +49 7531 8105-888
Fax +49 7531 8105-65
info@ingun.com



Prices and delivery times on request.
Technical changes reserved. 04/26_GB

Learn more about
Tool



ingun.com