



DIRETTAMENTE AL PRODOTTO

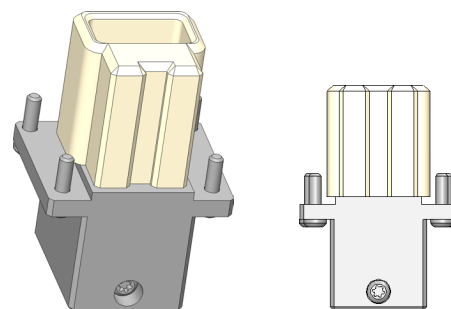
- Adattatore del cavo per spina di prova 113658 - PS-HSAL2-M-012-G5-B-01
- Per saldare i propri cavi al sistema di test, utilizzare trefoli AWG25 e superiori.
- Alloggiamento schermato
- Scarico della tensione del cavo fissabile

#### Funzione e montaggio:

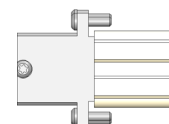
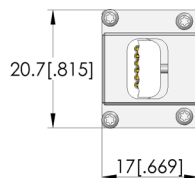
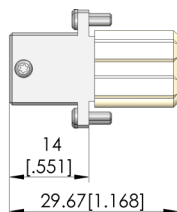
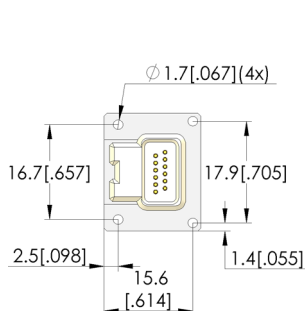
When soldering the contact element with an individual cable, 12-pole, AWG 25, or higher, solder in the slot of the pins to ensure the solder joint does not protrude beyond the outer diameter of the contact element. Press the contact elements in fully using the SW-ZW-GKS-075 insertion tool. Observe the specific pin configuration (1-12). Then screw the housing onto the test plug using 2x M1.6 screws and tighten the cable strain relief if required.

INGUN SELECTION

NEW



1:1



M1.6x6 T5 (5x)

#### Dati generali

Gruppo di prodotti:  
serie:  
Serie sottostrutturale:  
Temperatura min.:  
Temperatura max.:  
Conforme a RoHS:

spine (SE)  
SE-HSAL  
SE-HSAL spina  
0 °C  
50 °C  
sì

#### Dati del connettore

Interfaccia 1: HSAutolink2  
Genere 1: F Conduttore di segnale femmina / presa / femmina / jack  
Versione 1: straight dritto

PS-HSAL2-M-012-G5-B-01

SE-HSAL2-12-M-G-000

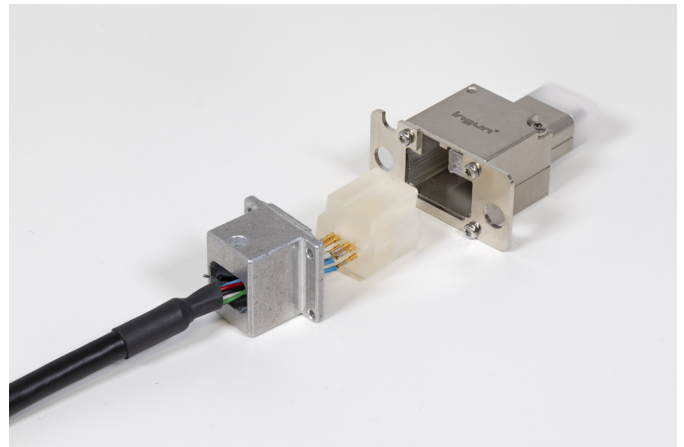
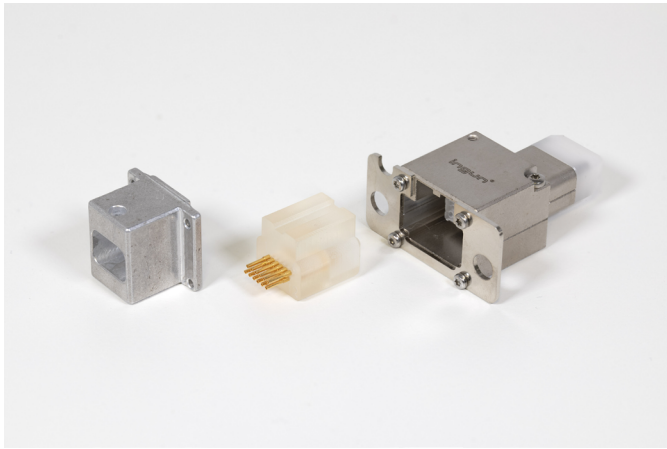
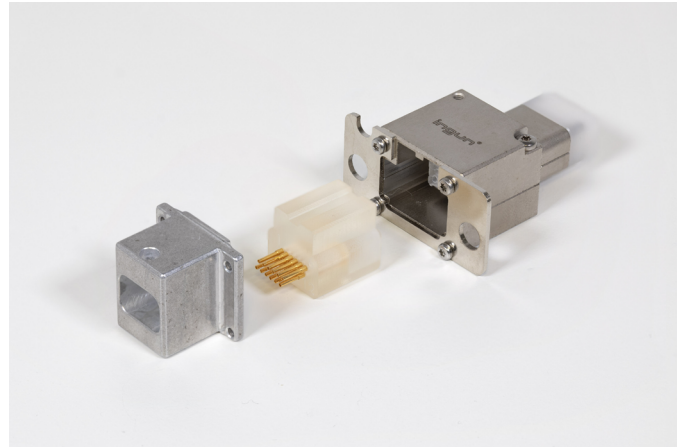
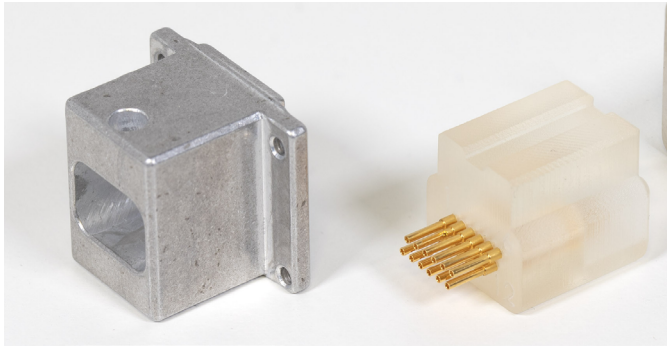
Articolo 114617



DIRETTAMENTE AL PRODOTTO

ingun®

Partner for Future Technology



### INGUN Prüfmittelbau GmbH

Max-Stromeyer-Straße 162  
78467, Constance, Germany  
Phone +49 7531 8105-0  
Customer hotline +49 7531 8105-888  
Fax +49 7531 8105-65  
info@ingun.com



Prezzi e tempi di consegna su richiesta.  
Modifiche tecniche riservate. 04/26\_IT

Ulteriori informazioni sull'argomento  
**Contatti a molla**



SPINA E CAVO

ingun.com