

# Receptacle RKS-365 23

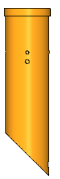
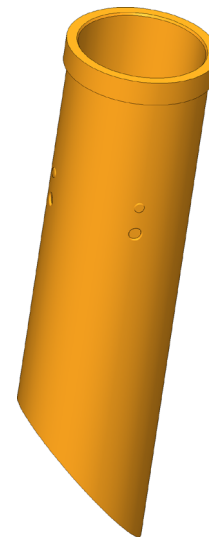
Item RKS-36523



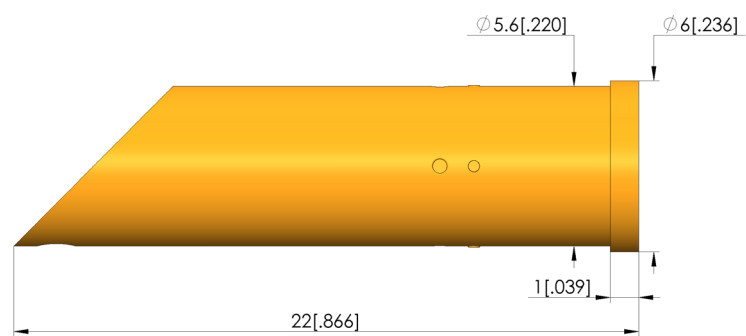
GO TO PRODUCT

**ingun**<sup>®</sup>

Partner for Future Technology



1:1



## General data

Product group:  
Series:  
Sub-series:  
Type of receptacle connection:  
Press ring:  
Surface area:  
Collar diameter:  
Collar height:  
Knurl:  
Vacuum-tight:  
RoHS-compliant:

Receptacles (KS)  
KS-365  
KS-365 press-in version  
Solder / open  
No  
Unplated  
6 mm [.236 in]  
1 mm [.039 in]  
No  
No  
Yes

## Mechanical data

Total length: 22 mm [.866 in]  
Outer diameter: 5.6 mm [.22 in]

## Mounting hole

Mounting hole in CEM1: 5.59 – 5.6 mm [.22 – .22 in]  
Mounting hole in FR4: 5.59 – 5.6 mm [.22 – .22 in]

## INGUN Prüfmittelbau GmbH

Max-Stromeyer-Straße 162  
78467, Constance, Germany  
Phone +49 7531 8105-0  
Customer hotline +49 7531 8105-888  
Fax +49 7531 8105-65  
info@ingun.com



Prices and delivery times on request.  
Technical changes reserved. 03/26\_GB

Learn more about  
Test probes

