

# Receptacle

## KS-622 M4 M5-RF

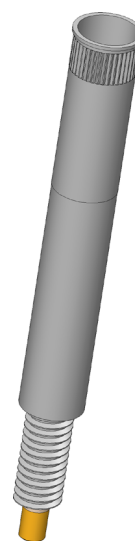
Item KS-622M4M5-RF



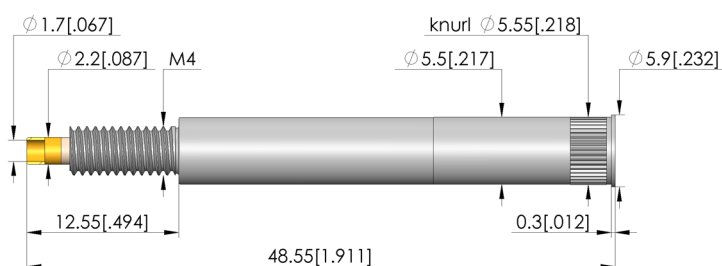
GO TO PRODUCT

**ingun**<sup>®</sup>

Partner for Future Technology



1:1



### General data

Product group: Receptacles (KS)  
 Series: KS-622  
 Sub-series: KS-622 M screw-in version  
 Type of receptacle connection: Thread (M)  
 Press ring: No  
 Surface area: Silver  
 Collar diameter: 5.9 mm [.232 in]  
 Collar height: 0.3 mm [.011 in]  
 Knurl: Yes  
 Vacuum-tight: yes (< 1 ccm / min)  
 RoHS-compliant: Yes

### Mechanical data

Total length: 48.5 mm [1.91 in]  
 Outer diameter: 5.5 mm [.216 in]

### Mounting hole

Mounting hole in CEM1: 5.5 – 5.52 mm [.216 – .217 in]  
 Mounting hole in FR4: 5.5 – 5.52 mm [.216 – .217 in]

### INGUN Prüfmittelbau GmbH

Max-Stromeyer-Straße 162  
 78467, Constance, Germany  
 Phone +49 7531 8105-0  
 Customer hotline +49 7531 8105-888  
 Fax +49 7531 8105-65  
 info@ingun.com



Prices and delivery times on request.  
 Technical changes reserved. 03/26\_GB

Learn more about  
 Test probes



ingun.com