

Receptacle KS-500 M2.5

Item KS-500M2.5



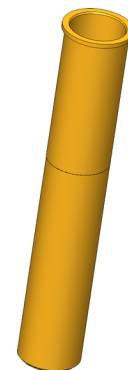
GO TO PRODUCT

ingun[®]

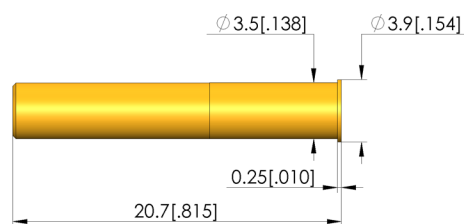
Partner for Future Technology

Kontaktsteckhülsen

Mit Gewinde zum Einpressen in das Trägermaterial



1:1



General data

Product group:
Series:
Sub-series:
Type of receptacle connection:
Press ring:
Surface area:
Collar diameter:
Collar height:
Knurl:
Vacuum-tight:
RoHS-compliant:

Receptacles (KS)
KS-500
KS-500 M screw-in version
Solder outer surface
No
Gold
3.9 mm [.153 in]
0.25 mm [.009 in]
No
No
Yes

Mechanical data

Total length: 20.7 mm [.814 in]
Outer diameter: 3.5 mm [.137 in]

Mounting hole

Mounting hole in CEM1: 3.49 mm [.137 in]
Mounting hole in FR4: 3.49 mm [.137 in]

INGUN Prüfmittelbau GmbH

Max-Stromeyer-Straße 162
78467, Constance, Germany
Phone +49 7531 8105-0
Customer hotline +49 7531 8105-888
Fax +49 7531 8105-65
info@ingun.com



Prices and delivery times on request.
Technical changes reserved. 05/26_GB

Learn more about
Test probes



ingun.com

RECEPTACLES