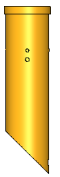
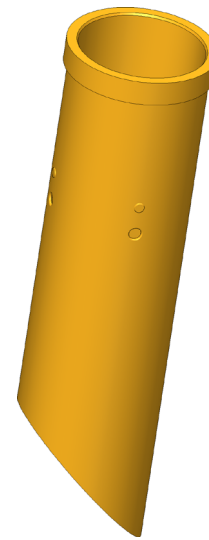
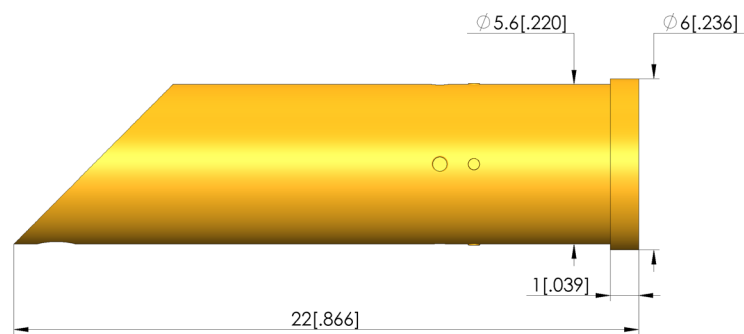




GO TO PRODUCT



1:1



General data

Product group:
Series:
Sub-series:
Type of receptacle connection:
Press ring:
Surface area:
Collar diameter:
Collar height:
Knurl:
Vacuum-tight:
RoHS-compliant:

Receptacles (KS)
KS-365
KS-365 press-in version
Solder / open
No
Gold
6 mm [.236 in]
1 mm [.039 in]
No
No
Yes

Mechanical data

Total length: 22 mm [.866 in]
Outer diameter: 5.6 mm [.22 in]

Mounting hole

Mounting hole in CEM1: 5.59 – 5.6 mm [.22 – .22 in]
Mounting hole in FR4: 5.59 – 5.6 mm [.22 – .22 in]

INGUN Prüfmittelbau GmbH

Max-Stromeyer-Straße 162
78467, Constance, Germany
Phone +49 7531 8105-0
Customer hotline +49 7531 8105-888
Fax +49 7531 8105-65
info@ingun.com



Learn more about
Test probes

