

# Battery contacting probe

## BCP-695 360 1800 A 100004-54

Item BCP-695-0001

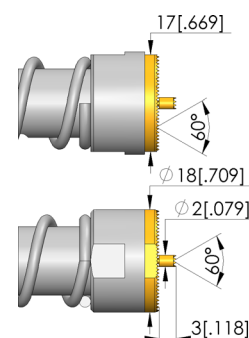
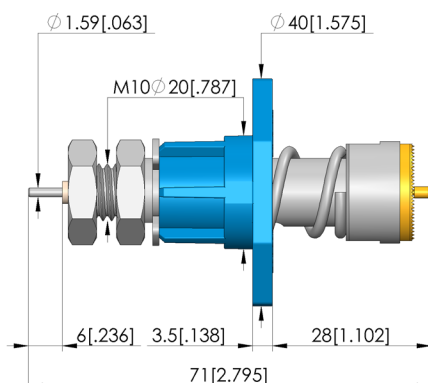
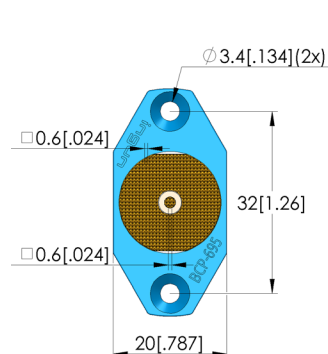
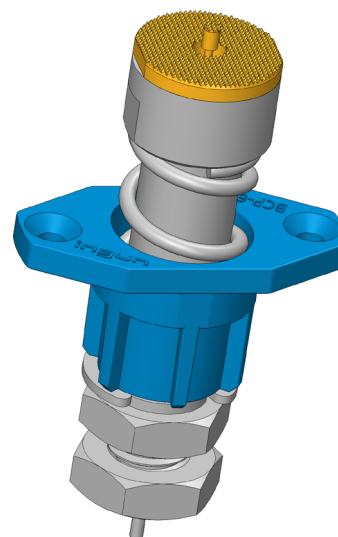
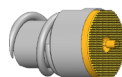


GO TO PRODUCT

**ingun**<sup>®</sup>

Partner for Future Technology

- Contact solution for 4680 cylindrical cells and prismatic cells
- Suitable for currents up to 120 A at  $\Delta T \leq 20$  K on aluminium
- Low-impedance probe with typical total resistance  $< 1.5$  mOhm
- Continuous plunger system with minimal internal resistance.
- Designed for a wide range of applications, especially for formation and other end-of-life (EOL) tests
- Simple flange mounting with flexible cable connection
- Dipole design for precise voltage measurement
- Easy connection of the voltage sensor: both soldering and cable lug installation possible



### General data

Product group:	Dipole BCP / 4-wire clamp
Sub-product group:	Dipole BCP / 4-wire clamp
Series:	BCP-695
Grid:	21 mm [826 mil]
Contacting from:	Post
Magnetic:	Yes
Installation type:	Flange
Quick-exchange system:	No
Type of test probe connection:	Thread connection
Adjustable installation height:	No
Non-rotating:	Yes
Min. temperature:	-40 °C [-40 °F]
Max. temperature:	80 °C [176 °F]
RoHS-compliant:	Yes

### Tip style data

Tip style:	60 serrated, small grid
Tip diameter:	18 mm [.708 in]
Tip style surface:	A gold
Tip style material:	3 CuBe

### Electrical data

Current load capacity / rated current:	120 A
Typical resistance (Ri):	.5 mOhm

### Mechanical data

Total length:	71 mm [2.79 in]
Barrel diameter:	20 mm [.787 in]
Maximum stroke:	7 mm [.275 in]
Spring pre-load:	47.6 N [171 ozf]
Collar height:	04
Spring force at working stroke:	100 N [359 ozf]
Recommended working stroke:	4.4 mm [.173 in]

# Battery contacting probe

## BCP-695 360 1800 A 100004-54

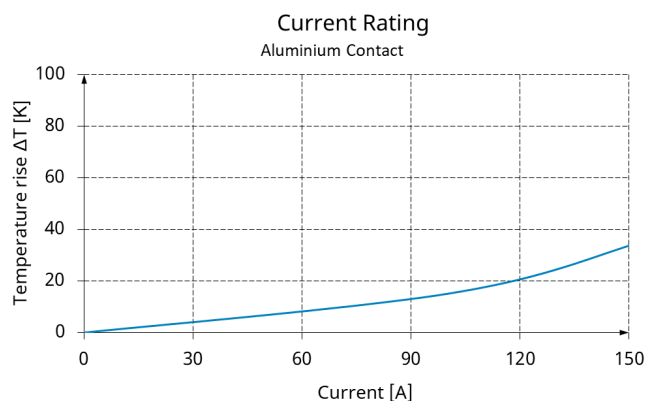
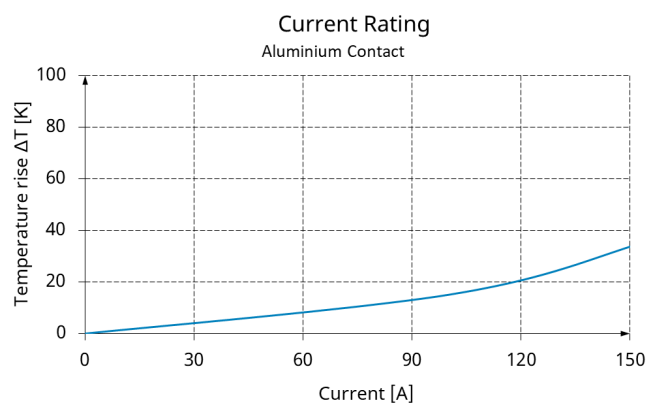
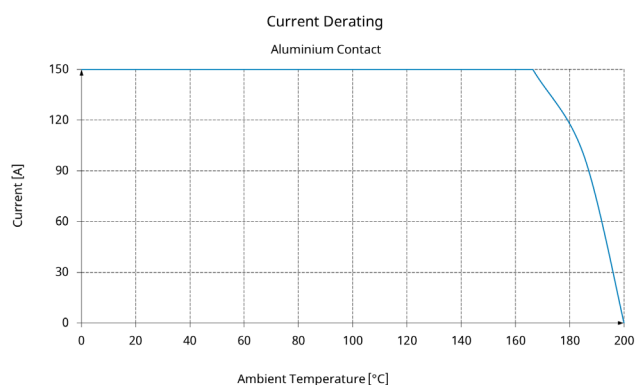
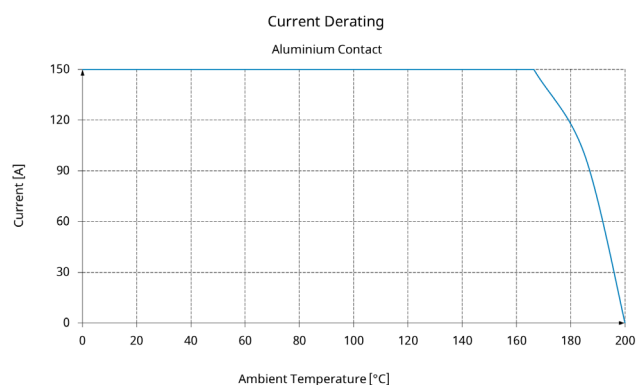
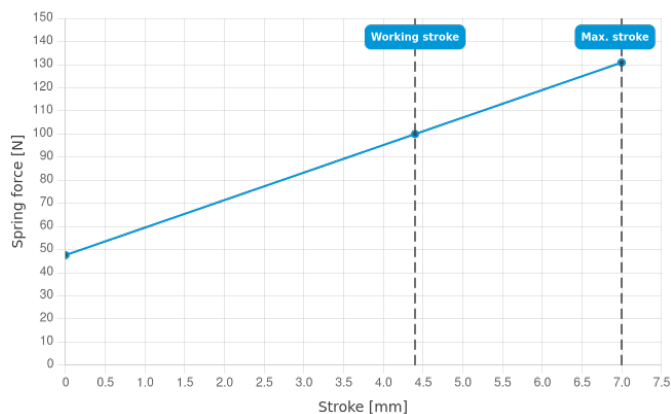
Item BCP-695-0001



GO TO PRODUCT

**ingun**<sup>®</sup>

Partner for Future Technology



### Cable plug assemblies

Part no.	Designation	Version
SE-AWG08-0001	SE-AWG08-6-AN0001-130-AN0002-5	cable assembly

### INGUN Prüfmittelbau GmbH

Max-Stromeyer-Straße 162  
78467, Constance, Germany  
Phone +49 7531 8105-0  
Customer hotline +49 7531 8105-888  
Fax +49 7531 8105-65  
info@ingun.com



Prices and delivery times on request.  
Technical changes reserved. 12/25\_GB

Learn more about  
Test probes

