

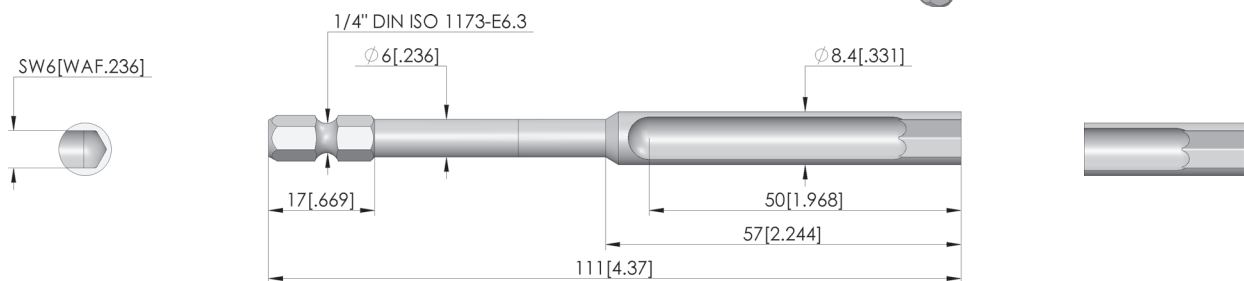
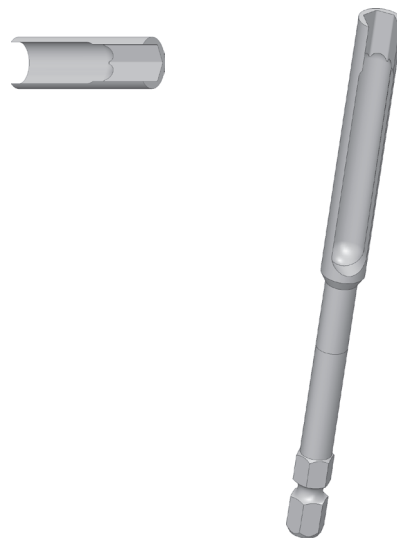


GO TO PRODUCT

BIT-Werkzeug

Zum Ein- und Ausschrauben von Kontaktstiften

NEW



General data

Screw-in torque max.:	40 cNm [3.54 lbf·in]
Product group:	Bit inserts (BIT)
Series:	BIT-SE
Tool for receptacle (KS):	Yes
Tool for test probe (GKS):	No
Min. tip diameter:	0 mm [0 in]
Max. tip diameter:	6.4 mm [.251 in]
Tool version:	Rigid
Screw-in torque:	5 – 40 cNm [.442 – 3.54 lbf·in]
RoHS-compliant:	Yes

INGUN Prüfmittelbau GmbH

Max-Stromeyer-Straße 162
78467, Constance, Germany
Phone +49 7531 8105-0
Customer hotline +49 7531 8105-888
Fax +49 7531 8105-65
info@ingun.com



Learn more about
Tool

