

Board marker probe receptacle

KTH-ME-D7-M8-SW7

Item 110672



GO TO PRODUCT

ingun[®]

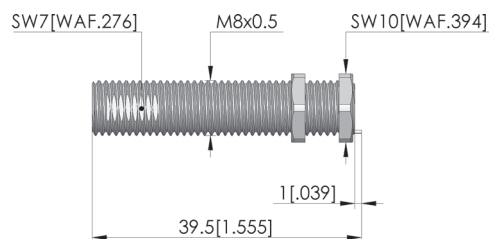
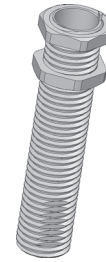
Partner for Future Technology

- Receptacle for electric board marker probe ME-E-R2,0-08-053-2S-BL6V-42V
- Anti-rotation anchor to perfectly align the engraving unit
- Quick, easy installation

Application

The receptacle is part of the electric board marker probe ME-E-R2,0-08-053-2S-BL6V-42V. It ensures alignment of the engraving unit with an anti-rotation anchor to enable reliable PCB marking.

When installing in the receptacle, ensure that the slot on the engraving unit is aligned with the anti-rotation anchor on the receptacle as shown by the arrow. The engraving unit must be inserted as far as it will go.



General data

Product group:

Series:

Type:

Version:

Accessory type:

Scope of delivery:

Material:

Height:

Weight:

Min. temperature:

Max. temperature:

RoHS-compliant:

Mechanical accessory

KTH

Receptacle

ME-E

Customising accessories

Incl. 2x lock nut

2.0401

38.5 mm [1.51 in]

0.01 kg [.022 lbs]

10 °C [50 °F]

60 °C [140 °F]

Yes

Compatible with

Board marker probe (ME):

ME-E-R2,0-08-053-2S-BL6V-42V

Technical data

Installation:

Diameter:

Inner diameter:

Thread M8 x 0.5

M8x0,5 mm

6.58 mm [.259 in]

INGUN Prüfmittelbau GmbH

Max-Stromeyer-Straße 162

78467, Constance, Germany

Phone +49 7531 8105-0

Customer hotline +49 7531 8105-888

Fax +49 7531 8105-65

info@ingun.com



Prices and delivery times on request.
Technical changes reserved. 11/25_GB