

# Switching Probe (NO)

## SKS-215 302 180 A 3002

Item SKS-215-0002

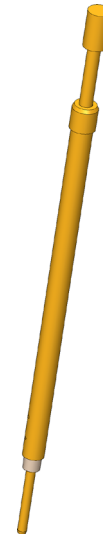
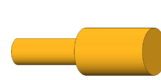


GO TO PRODUCT

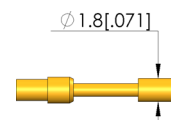
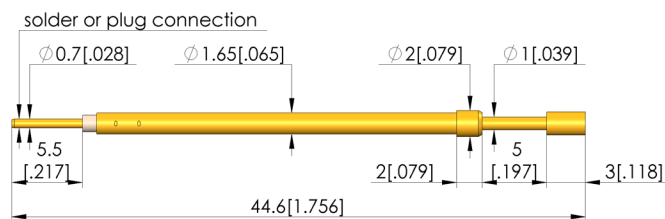
**ingun**<sup>®</sup>

Partner for Future Technology

- For a wide range of applications: performs components detection check, is a switch for detecting closed/open states, and a signal transmitter for process control
- The electrical connection is ensured by installation using a receptacle
- Designed as normally open (NO), i.e. The circuit is closed when actuated



1:1



### General data

Product group:	SKS (pressed-in)
Sub-product group:	SKS (pressed-in)
Series:	SKS-215
Grid:	2.54 mm [100 mil]
Contacting from:	Post
Magnetic:	Yes
Installation type:	Plug-in
Quick-exchange system:	No
Type of test probe connection:	Plug
Adjustable installation height:	No
Non-rotating:	No
Compatible connector(s):	SE-215
Compatible receptacle(s):	KS-215
Min. temperature:	-40 °C [-40 °F]
Max. temperature:	80 °C [176 °F]
RoHS-compliant:	Yes

### Tip style data

Tip style:	02 flat
Tip diameter:	1.8 mm [.07 in]
Tip style surface:	A gold
Tip style material:	3 CuBe

### Electrical data

Current load capacity / rated current:	3 A
--	-----

### Mechanical data

Total length:	44.6 mm [1.75 in]
Barrel diameter:	1.65 mm [.064 in]
Maximum stroke:	5 mm [.196 in]
Spring pre-load:	0.5 N [1.79 ozf]
Collar height:	02
Switch path:	1.5 mm [.059 in]
Switching point:	8.5 mm [.334 in]
Spring force at switching point:	0.9 N [3.23 ozf]

### INGUN Prüfmittelbau GmbH

Max-Stromeyer-Straße 162  
78467, Constance, Germany  
Phone +49 7531 8105-0  
Customer hotline +49 7531 8105-888  
Fax +49 7531 8105-65  
info@ingun.com



Prices and delivery times on request.  
Technical changes reserved. 12/25\_GB

Learn more about  
Test probes



ingun.com