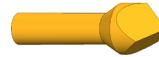




GO TO PRODUCT

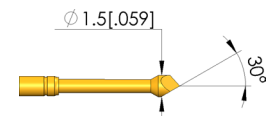
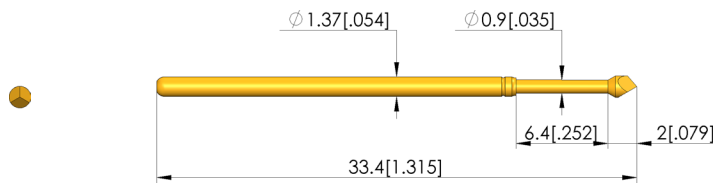
- Well-established test probes for contacting PCBs
- For optimal contact to the test points (e.g. pads, vias, and pins), various tip styles with various diameters and finishes are available.
- Various spring forces available as well as versions with stainless steel springs suitable for high temperatures
- Used for setting the optimum stroke conditions in the test fixture, various installation heights can be achieved by combining test probes and receptacles



INGUN SELECTION



1:1



General data

Product group:
Sub-product group:
Series:
Grid:
Contacting from:
Magnetic:
Installation type:
Quick-exchange system:
Adjustable installation height:
Non-rotating:
Compatible receptacle(s):
Min. temperature:
Max. temperature:
RoHS-compliant:

Accessories (GKS / ADA)
Interface block probes
GKS-100
2.54 mm [100 mil]

Yes
Plug-in
Yes
No
No
KS-100
-40 °C [-40 °F]
80 °C [176 °F]
Yes

Tip style data

Tip style:
Tip diameter:
Tip style surface:
Tip style material:

07 90° 3-edged chisel, self-cleaning
1.5 mm [.059 in]
A gold
3 CuBe

Electrical data

Current load capacity / rated current:
Typical resistance (Ri):

5 A
20 mOhm

Mechanical data

Total length:
Barrel diameter:
Maximum stroke:
Spring pre-load:
Collar height:
Spring force at working stroke:
Recommended working stroke:

33.4 mm [1.31 in]
1.37 mm [.053 in]
6.35 mm [.25 in]
0.18 N [.647 ozf]
00
0.6 N [2.15 ozf]
4.3 mm [.169 in]

Test Probe

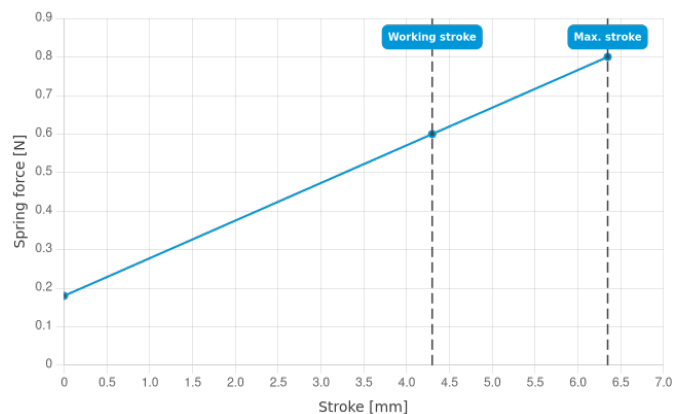
GKS-100 307 150 A 0600

Item GKS-100-0444



ingun[®]

Partner for Future Technology



INGUN Prüfmittelbau GmbH

Max-Stromeyer-Straße 162
78467, Constance, Germany
Phone +49 7531 8105-0
Customer hotline +49 7531 8105-888
Fax +49 7531 8105-65
info@ingun.com



Prices and delivery times on request.
Technical changes reserved. 11/25_GB

Learn more about
Test probes

