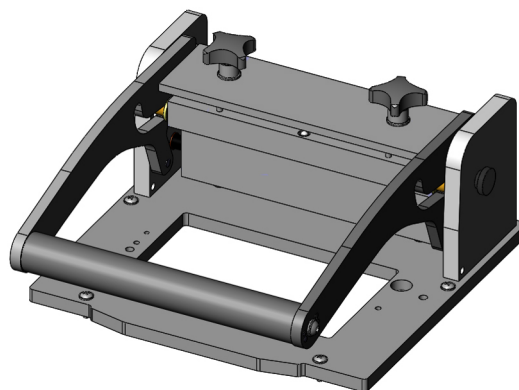




GO TO PRODUCT

- Parallel closing drive unit with mounting plate, without internal interface
- High contact force
- Freely configurable signal transmission with VG multipoint connector
- Quick, easy, precise installation
- Can be used for various applications



General data

Product group:
Main series:
Series:
Size:
Test fixture type:
Contact stroke generation:
Max. interface signals:
Interface blocks required:
Max. contact force:
Approx. parallel contact stroke:
Min. temperature:
Max. temperature:
RoHS-compliant:

Manual drive unit
ATE MAxxx
ATE MA2xx
260
With mounting plate
Manual
No
300 N [1,079 ozf]
15 mm [.59 in]
10 °C [50 °F]
60 °C [140 °F]
Yes

Technical data

Pressure frame closing force: 60 N [215 ozf]
Pressure frame opening angle: 50 °
Outer dimensions, open (WxDxH): 263 x 280 x 250 mm [10.3 x 11 x 9.84 in]
Outer dimensions, closed (WxDxH): 263 x 296 x 134 mm [10.3 x 11.6 x 5.27 in]

INGUN Prüfmittelbau GmbH

Max-Stromeyer-Straße 162
78467, Constance, Germany
Phone +49 7531 8105-0
Customer hotline +49 7531 8105-888
Fax +49 7531 8105-65
info@ingun.com



Learn more about
Test fixture kits

