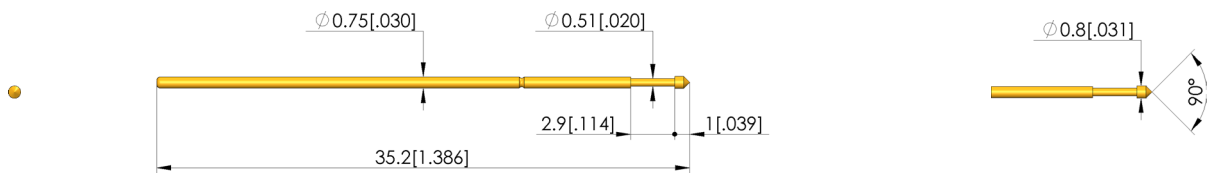
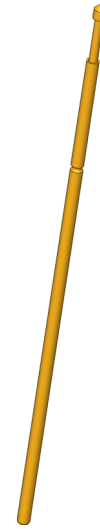




GO TO PRODUCT

- Inner conductor for RF test probes (HFS)
- Can be used for service or repair



### General data

Product group:  
 Sub-product group:  
 Series:  
 Grid:  
 Contacting from:  
 Magnetic:  
 Installation type:  
 Quick-exchange system:  
 Adjustable installation height:  
 Non-rotating:  
 Min. temperature:  
 Max. temperature:  
 RoHS-compliant:

Accessories (GKS / ADA)  
 RF inner conductor  
 GKS-051  
 1.27 mm [50 mil]  
 Via  
 Yes  
 Plug-in  
 Yes  
 No  
 No  
 -40 °C [-40 °F]  
 80 °C [176 °F]  
 Yes

### Tip style data

Tip style:  
 Tip diameter:  
 Tip style surface:  
 Tip style material:

58 90° conical, self-cleaning, special length  
 0.8 mm [.031 in]  
 A gold  
 3 CuBe

### Electrical data

Current load capacity / rated current:  
 Typical resistance (Ri):

2 A  
 20 mOhm

### Mechanical data

Total length:  
 Barrel diameter:  
 Maximum stroke:  
 Spring pre-load:  
 Collar height:  
 Spring force at working stroke:  
 Recommended working stroke:

35.2 mm [1.38 in]  
 0.75 mm [.029 in]  
 2.9 mm [.114 in]  
 1.07 N [3.84 ozf]  
 00  
 2 N [7.19 ozf]  
 1.2 mm [.047 in]

# Test Probe

## GKS-051 358 080 A 2000

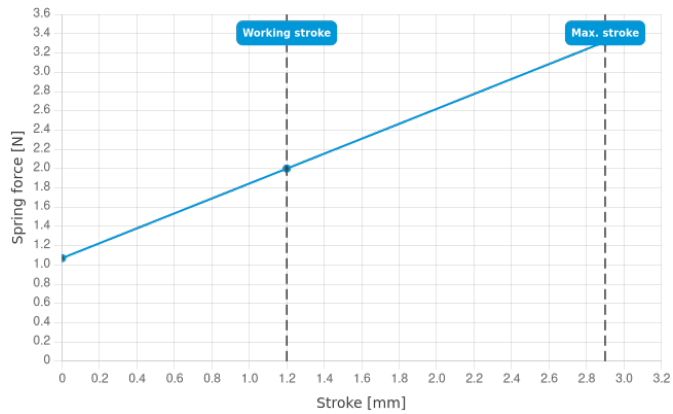
Item GKS-051-0016



GO TO PRODUCT

# ingun®

Partner for Future Technology



### INGUN Prüfmittelbau GmbH

Max-Stromeyer-Straße 162  
78467, Constance, Germany  
Phone +49 7531 8105-0  
Customer hotline +49 7531 8105-888  
Fax +49 7531 8105-65  
info@ingun.com



Prices and delivery times on request.  
Technical changes reserved. 03/26\_GB

Learn more about  
Test probes

