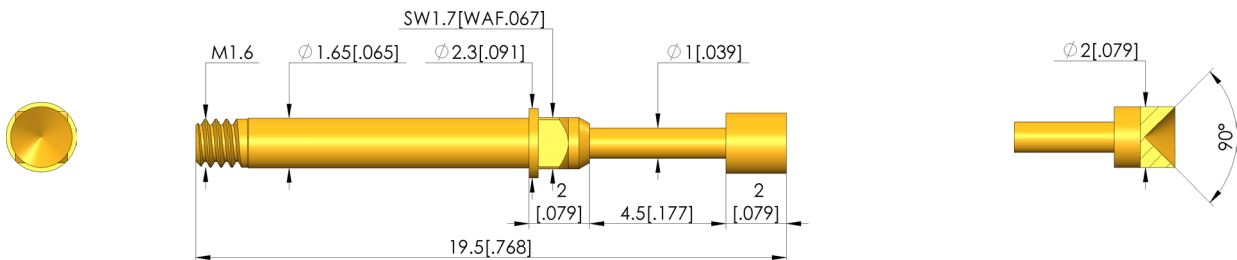
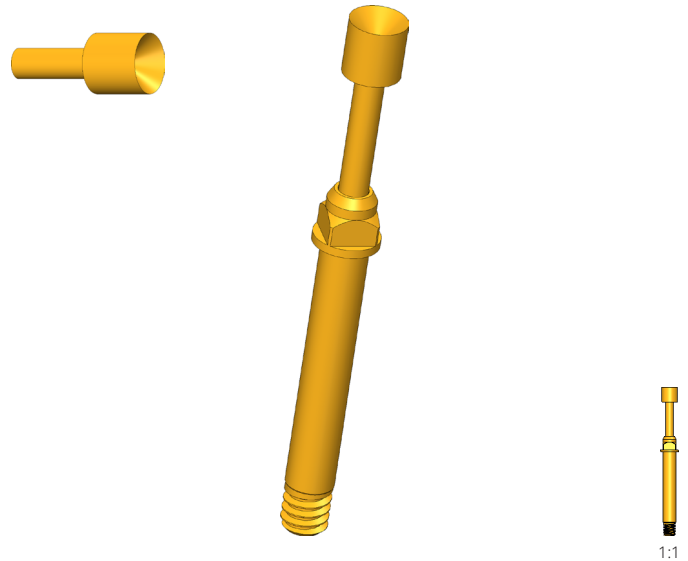




Durchgangsprüfung

Zur Überprüfung von möglichen offenen Verbindungen, Kurzschlüssen und Fehlverdrahtungen

- Short-stroke screw-in test probes for applications with possible vibrations or unwanted lateral and axial forces (migration of the test probes out of the receptacles is safely prevented)
- The screw-in test probe is securely installed in the KS using a torque screwdriver and bit tool. The required screw-in torque is applied via a square post on the receptacle.
- Stainless steel versions for temperatures from -100 °C up to +200 °C available



General data

| | |
|---------------------------------|--------------------------------|
| Screw-in torque max.: | 5 cNm [.442 lbf·in] |
| Product group: | Screw-in test probe |
| Sub-product group: | Screw-in test probe |
| Series: | GKS-427 |
| Grid: | 2.54 mm [100 mil] |
| Contacting from: | Post |
| Magnetic: | Yes |
| Installation type: | Screw-in |
| Quick-exchange system: | Yes |
| Adjustable installation height: | No |
| Non-rotating: | No |
| Screw-in torque: | 3 – 5 cNm [.265 – .442 lbf·in] |
| Compatible receptacle(s): | KS-427 M |
| Min. temperature: | -40 °C [-40 °F] |
| Max. temperature: | 80 °C [176 °F] |
| RoHS-compliant: | Yes |

Tip style data

| | |
|---------------------|-----------------|
| Tip style: | 03 inverse cone |
| Tip diameter: | 2 mm [.078 in] |
| Tip style surface: | A gold |
| Tip style material: | 3 CuBe |

Electrical data

| | |
|--|---------|
| Current load capacity / rated current: | 5 A |
| Typical resistance (Ri): | 20 mOhm |

Mechanical data

| | |
|---------------------------------|-------------------|
| Total length: | 19.5 mm [.767 in] |
| Barrel diameter: | 1.65 mm [.064 in] |
| Maximum stroke: | 4.5 mm [.177 in] |
| Spring pre-load: | 0.24 N [.863 ozf] |
| Collar height: | 02 |
| Spring force at working stroke: | 0.8 N [2.87 ozf] |
| Recommended working stroke: | 3.5 mm [.137 in] |

Test Probe

GKS-427 303 200 A 0802 M

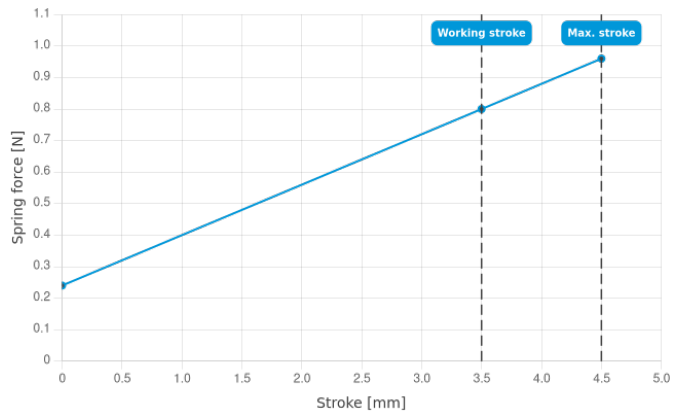
Item GKS-427-0050



GO TO PRODUCT

ingun®

Partner for Future Technology



INGUN Prüfmittelbau GmbH

Max-Stromeyer-Straße 162
78467, Constance, Germany
Phone +49 7531 8105-0
Customer hotline +49 7531 8105-888
Fax +49 7531 8105-65
info@ingun.com



Prices and delivery times on request.
Technical changes reserved. 04/26_GB

Learn more about
Screw-in test probe



SCREW-IN TEST PROBE

ingun.com