

# nanoVTEP Signal Conditioner B.

## OTE-KS-NV-064-MUX

Item 108710

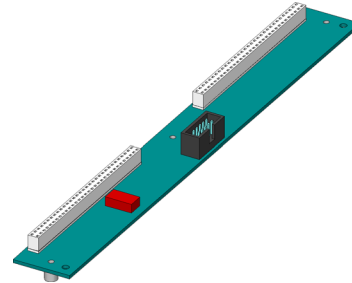


**ingun**<sup>®</sup>

Partner for Future Technology

- Component for the Opens test, for capacitive testing of semiconductor chips for open circuits, short circuits and soldering faults
- Suitable for all Keysight 307x test systems with software version 9.2 or higher
- Improved repeating accuracy, test coverage and error detection in comparison to VTEP technology
- 2x 64 contacts for connecting up to 64 nanoVTEP probes

**INGUN SELECTION**



### Application

The nanoVTEP test probes are used for capacitive testing of integrated circuits in order to check the wire-bonded connections inside an integrated circuit for breakage, short circuits, and solder defects.

The nanoVTEP test probes are Keysight's latest vectorless opens test solution and replace the existing VTEP test probes. In addition to significantly improved repeating accuracy, test coverage, and defect detection, the new nanoVTEP probes offer up to 40% amplification of weak signal, as the amplifier is placed close to the sensor plate.

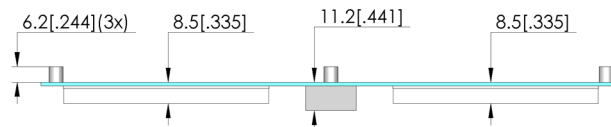
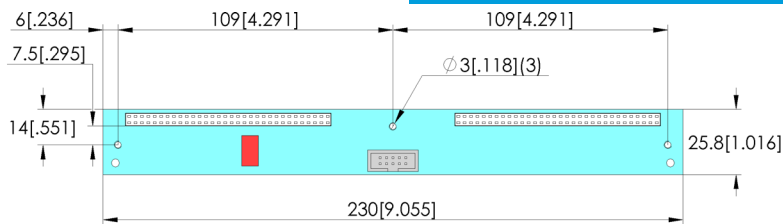
The new nanoVTEP probes only work in conjunction with the nanoVTEP MUX boards. Both nanoVTEP and VTEP probes can be combined in one test fixture.

#### Note:

For professional customisation of the KEYSIGHT nanoVTEP probes, refer to the customising instructions INFO 4250.

#### Note:

nanoVTEP probes can be safely used on all Keysight 307x test systems that have software version 9.2 or newer. If the software version you are using is older than 9.2, please contact the test system manufacturer Keysight directly



### General data

Product group:	Opens tests
Series:	OTE
Type:	Keysight Vectorless Test
Version:	nanoVTEP signal conditioner board
Accessory type:	Customising accessories
Width:	25.8 mm [1.01 in]
Height:	17.4 mm [.685 in]
Min. temperature:	10 °C [50 °F]
Max. temperature:	60 °C [140 °F]
RoHS-compliant:	Yes

### Compatible with

Vacuum test fixtures (VA):	VA 2070S/L
Interchangeable kits (WS):	

### Technical data

Installation:	Thread M3
Number of poles:	2x 64
Length:	230 mm [9.05 in]
Outer dimensionS (WxDxH):	230 x 25.8 x 17.4 mm [9.05 x 1.01 x .685 in]

# nanoVTEP Signal Conditioner B. OTE-KS-NV-064-MUX

Item 108710



GO TO PRODUCT

**ingun**<sup>®</sup>

Partner for Future Technology

## Accessories and single parts

Part no.	Designation	Version
Accessories		
114387	OTU-KS-NV-004-004-G2	nanoVTEP single probe 0.16 inches incl. nanoVTEP
114388	OTU-KS-NV-007-004-G2	nanoVTEP single probe B/C size incl. nanoVTEP
114386	OTU-KS-NV-010-010-G2	nanoVTEP single probe 0.4 inches incl. nanoVTEP
109704	OTU-KS-NV-031-031	nanoVTEP sensor plate 1.2 inches incl. nanoVTEP amplifier and 2x test probes
109705	OTU-KS-NV-065-065	nanoVTEP sensor plate 2.5 inches incl. nanoVTEP amplifier and 2x test probes
109706	OTU-KS-NV-155-013	nanoVTEP sensor plate 152 mm x 12.5 mm incl. nanoVTEP amplifier and 2x test probes
Single parts		
114385	OTC-KS-NV-EP-ST-KS-G2	nanoVTEP (Amplifier, barrel and receptacle)
108707	OTC-KS-NV-EP	nanoVTEP amplifier
114373	OTC-KS-NV-ST-G2	nanoVTEP barrel incl. spring clip
114374	OTC-KS-NV-KS-G2	nanoVTEP receptacle
111606	OTC-KS-NV-GKS	nanoVTEP test probe
108701	OTC-KS-NV-SP-004-004	nanoVTEP single probe 0.16 inches
108702	OTC-KS-NV-SP-007-004	nanoVTEP single probe B/C size
108703	OTC-KS-NV-SP-010-010	nanoVTEP single probe 0.4 inches
108704	OTC-KS-NV-SP-031-031	nanoVTEP sensor plate 1.2 inches
108705	OTC-KS-NV-SP-065-065	nanoVTEP sensor plate 2.5 inches
108706	OTC-KS-NV-SP-155-013	nanoVTEP sensor plate 152 mm x 12.5 mm

## INGUN Prüfmittelbau GmbH

Max-Stromeyer-Straße 162  
78467, Constance, Germany  
Phone +49 7531 8105-0  
Customer hotline +49 7531 8105-888  
Fax +49 7531 8105-65  
info@ingun.com



Prices and delivery times on request.  
Technical changes reserved. 04/26\_GB