

Push rod

NHS-ST-36,4-2,5-POM-AL

Item 17712



GO TO PRODUCT

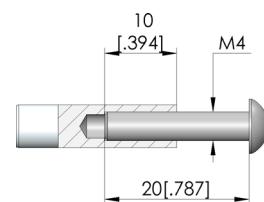
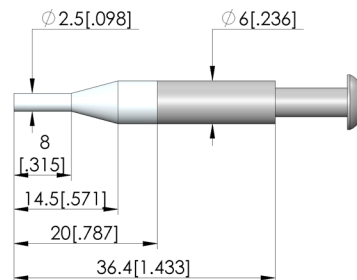
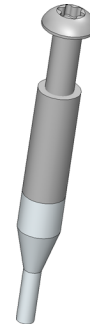
ingun[®]

Partner for Future Technology

- Trusted push rods for reliable, rigid fixing of the PCB in the probe field against the force of the test probes
- Robust, pressure-resistant design
- Quick, easy installation

Application

Push rods (NHS) are used in customisations to securely hold electronic circuit boards in place against the force of the test probes during contacting in the test fixture. Push rods are mounted in the pressure frame plate.



General data

Product group:
Series:
Type:
Version:
Accessory type:
Outer dimensions (TxL):
Colour:
RoHS-compliant:

Push rods (NHS)
NHS-ST
Rigid
Not ESD compliant
Customising accessories
6 x 36.4 mm [0.236 x 1.43 in]
Untreated
Yes

Compatible with

Exchangeable kits version:
PA exchangeable kits (ATS PA):

ESD
ATS PAZxxx

Technical data

Tip diameter:
Pushrod shaft diameter:
Tip material:
Shaft material:
True running:
Installation:
Thread:
Tip length:

2.5 mm [0.098 in]
6 mm [0.236 in]
POM
AL
Screwed in
M4x10 mm
20 mm [0.787 in]

Mechanical data

Total length: 36.4 mm [1.43 in]

INGUN Prüfmittelbau GmbH

Max-Stromeyer-Straße 162
78467, Constance, Germany
Phone +49 7531 8105-0
Customer hotline +49 7531 8105-888
Fax +49 7531 8105-65
info@ingun.com



Prices and delivery times on request.
Technical changes reserved. 11/25_GB