

Push rod

NHS-ST-15,0-5,0-KU-D3-ESD

Item 25856



GO TO PRODUCT

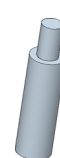
ingun[®]

Partner for Future Technology

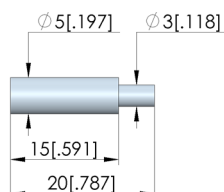
- Trusted push rods for reliable, rigid fixing of the PCB in the probe field against the force of the test probes
- Robust, pressure-resistant design
- Quick, easy installation

Application

Push rods (NHS) are used in customisations to securely hold electronic circuit boards in place against the force of the test probes during contacting in the test fixture. Push rods are mounted in the pressure frame plate.



1:1



General data

Product group:
Series:
Type:
Version:
Accessory type:
Outer dimensions (TxL):

Push rods (NHS)
NHS-ST
Rigid
ESD (<10⁵)
Customising accessories
5 x 20 mm [.196 x .787 in]

Compatible with

Vacuum test fixtures (VA):

VA 207x-ZSK

Technical data

Tip diameter:
Pushrod shaft diameter:
Tip material:
Shaft material:
True running:
Installation:
Thread:
Tip length:

5 mm [.196 in]
3 mm [.118 in]
KU
KU
Plugged
Ø 3,0x5 mm
15 mm [.59 in]

Mechanical data

Total length: 20 mm [.787 in]



INGUN Prüfmittelbau GmbH

Max-Stromeyer-Straße 162
78467, Constance, Germany
Phone +49 7531 8105-0
Customer hotline +49 7531 8105-888
Fax +49 7531 8105-65
info@ingun.com



Prices and delivery times on request.
Technical changes reserved. 11/25_GB