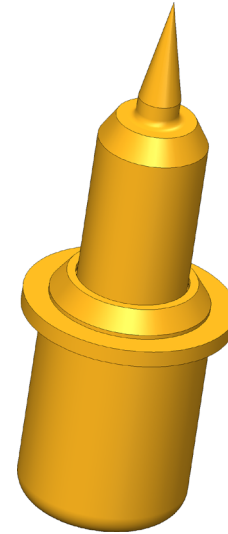
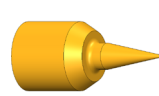


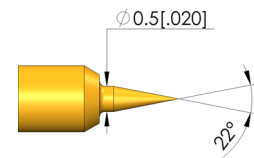
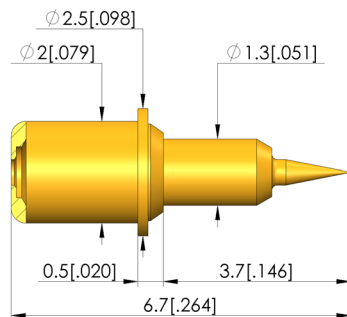


GO TO PRODUCT

- Short-stroke probes ensure a reliable signal and power supply, as well as a quick exchange of assemblies in case of maintenance
- For the construction of easily separable electronic interfaces, such as in charging trays for electronic devices
- Particularly suitable for use in applications where space for overall length is limited
- Compensation of possible height and component tolerances
- Stainless steel versions for temperatures from -100 °C up to +200 °C available



1:1



### General data

Product group:	Assorted test probes
Sub-product group:	Short stroke GKS / charge and transfer GKS
Series:	GKS-967
Grid:	3 mm [118 mil]
Contacting from:	Pad
Magnetic:	Yes
Installation type:	Plug-in
Quick-exchange system:	Yes
Adjustable installation height:	No
Non-rotating:	No
Compatible receptacle(s):	KS-967 25
Min. temperature:	-40 °C [-40 °F]
Max. temperature:	80 °C [176 °F]
RoHS-compliant:	Yes

### Tip style data

Tip style:	15 22° high-carbon tip, self-cleaning
Tip diameter:	1.3 mm [.051 in]
Tip style surface:	A gold
Tip style material:	2 steel

### Electrical data

Current load capacity / rated current:	5 A
Typical resistance (Ri):	10 mOhm

### Mechanical data

Total length:	6.7 mm [.263 in]
Barrel diameter:	2 mm [.078 in]
Maximum stroke:	1.2 mm [.047 in]
Spring pre-load:	0.38 N [1.36 ozf]
Collar height:	01
Spring force at working stroke:	1 N [3.59 ozf]
Recommended working stroke:	1 mm [.039 in]

# Test Probe

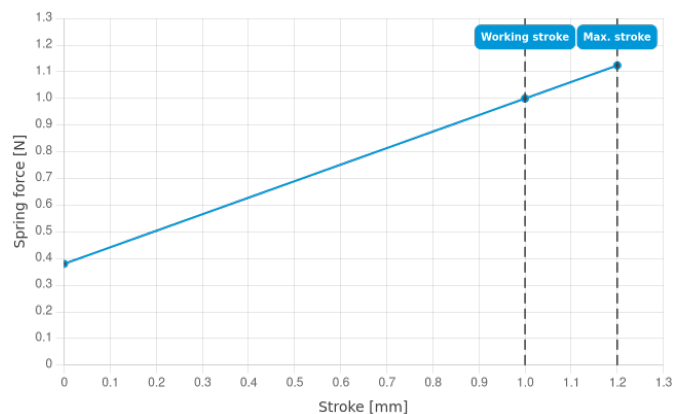
## GKS-967 215 130 A 1001

Item GKS-967-0026



**ingun**<sup>®</sup>

Partner for Future Technology



### INGUN Prüfmittelbau GmbH

Max-Stromeyer-Straße 162  
78467, Constance, Germany  
Phone +49 7531 8105-0  
Customer hotline +49 7531 8105-888  
Fax +49 7531 8105-65  
info@ingun.com



Prices and delivery times on request.  
Technical changes reserved. 12/25\_GB

Learn more about  
Test probes

