

Battery contacting probe

BCP-690 360 500 A 10002

产品 BCP-690-0001

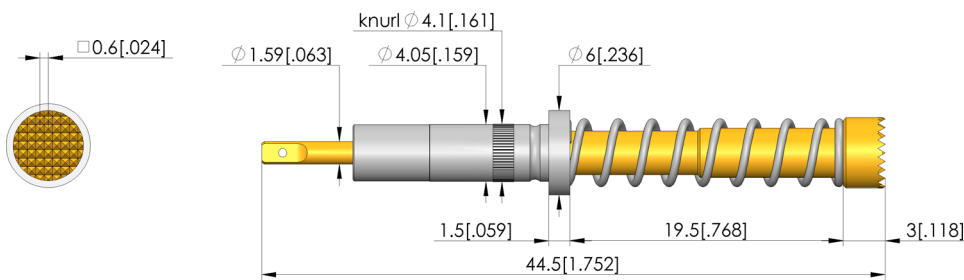
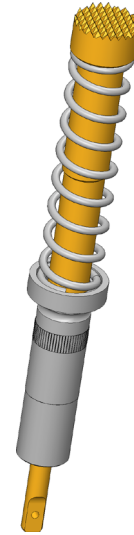


直接访问产品

ingun[®]

Partner for Future Technology

- Ideal for end-of-line validation of cells and batteries - designed specifically for applications such as OCV, AC-IR, insulation measurement and Hi-Pot measurement
- Maximum process reliability – Large stroke compensates cell tolerances and process variations, ensuring a stable contact
- Designed for continuous operation ($\geq 500k$ cycles) - Minimizes downtime and maintenance – ideal for high-volume battery cell production
- Stable, low contact resistance when contacting through oxide layers - due to aggressive and serrated tip and continuous plunger design
- Easy Installation - simple assembly because of the push-in type design
- Maximum integration flexibility - Multiple connection options (plug-in, threaded, soldering) enable seamless integration into any test setup



一般数据

产品组:
子产品组:
结构系列:
Application rec.:
栅格:
电磁:
安装类型:
快速更换系统:
探针上的连接类型:
安装高度, 可调:
防扭转:
合适的插头:
最小温度:
最大温度:
RoHS 符合性:

电池触探
标准宽带电流探针 (BCP) (插接式)
BCP-690
7 mm
是
可压入
否
插头
否
否
SE-AWG20-0002
-100 °C
200 °C
是

针头形状数据

针头形状:
针头直径:
针头形状 表面:
针头形状 材料:

60 网纹/锯齿状格, 细间距
5 mm
A 金
3 镀铜

电气数据

载流能力/额定电流:
电阻 (Ri) 典型值:

20 A
2 mOhm

机械数据

总长:
针管直径:
最大行程:
弹簧预紧力:
E 尺寸/卡环尺寸:
工作行程中的弹簧力:
建议工作行程:
Mounting hole in probe plate (KTP):

44,5 mm
4,1 mm
10 mm
3,85 N
02
10 N
5 mm
4,07 - 4,09 mm

Battery contacting probe BCP-690 360 500 A 10002

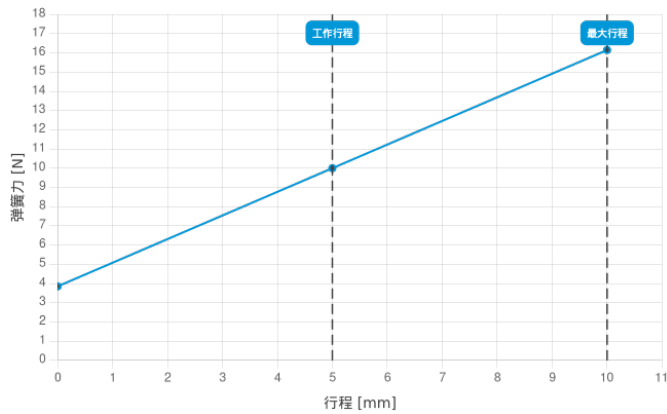
产品 BCP-690-0001



直接訪問產品

ingun®

Partner for Future Technology



工具

Part no.	Designation	Version
SW-0016	SW-BCP-690	Insertion Tool

INGUN Prüfmittelbau GmbH

Max-Stromeyer-Straße 162
78467 Konstanz, 德国
中央办公室。+49 7531 8105-0
客户热线。+49 7531 8105-888
传真 +49 7531 8105-65
info@ingun.com



根據要求提供價格和交貨時間。
保留技術更改。05/26_CN

关于该主题的更多信息
探针

