

High-current test probe

HSS-100 319 150 A 3000

Item HSS-100-0003

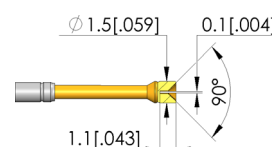
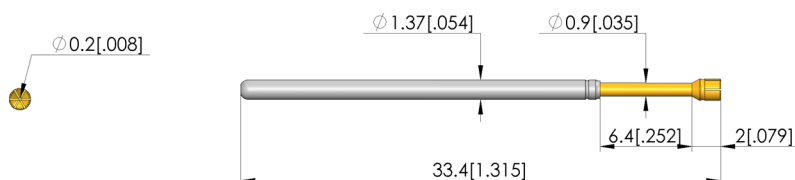
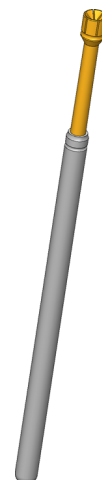


GO TO PRODUCT

ingun[®]

Partner for Future Technology

- Trusted, robust high-current probes, optimally sized for current load capacity ratio
- Low-Ohm probe with Ri typical: < 10 mOhm
- For use in function and burn-in tests
- Large selection of tip styles and spring forces for optimum contact with DUT
- Optimum adjustment of the stroke ratios in the test fixture: The test probe collar is available in different heights, which, in combination with the receptacles, allows a range of installation heights



General data

Product group:
Sub-product group:
Series:
Grid:
Contacting from:
Magnetic:
Installation type:
Quick-exchange system:
Adjustable installation height:
Non-rotating:
Compatible receptacle(s):
Min. temperature:
Max. temperature:
RoHS-compliant:

International standard HSS
International standard HSS
HSS-100
2.54 mm [100 mil]
Post
Yes
Plug-in
Yes
No
No
KS-100
-100 °C [-148 °F]
200 °C [392 °F]
Yes

Tip style data

Tip style:
Tip diameter:
Tip style surface:
Tip style material:

19 90° inverse cone, slotted, self cleaning
1.5 mm [.059 in]
A gold
3 CuBe

Electrical data

Current load capacity / rated current:
Typical resistance (Ri):

16 A
10 mOhm

Mechanical data

Total length:
Barrel diameter:
Maximum stroke:
Spring pre-load:
Collar height:
Spring force at working stroke:
Recommended working stroke:

33.4 mm [1.31 in]
1.37 mm [.053 in]
6.35 mm [.25 in]
1.05 N [3.77 ozf]
00
3 N [10.7 ozf]
4.3 mm [.169 in]

High-current test probe

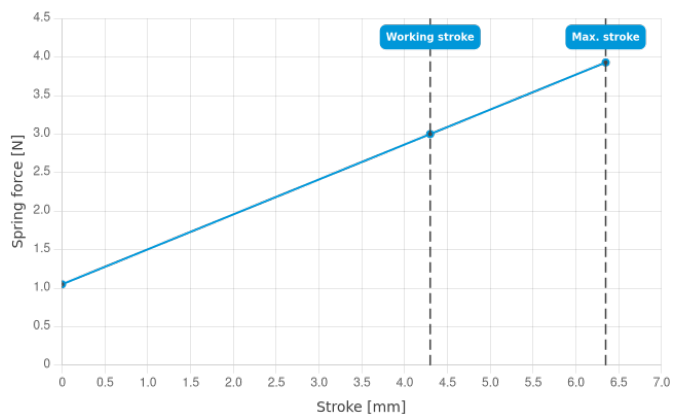
HSS-100 319 150 A 3000

Item HSS-100-0003



ingun[®]

Partner for Future Technology



INGUN Prüfmittelbau GmbH

Max-Stromeyer-Straße 162
78467, Constance, Germany
Phone +49 7531 8105-0
Customer hotline +49 7531 8105-888
Fax +49 7531 8105-65
info@ingun.com



Prices and delivery times on request.
Technical changes reserved. 12/25_GB

Learn more about
High-current test probes



ingun.com

HIGH-CURRENT TEST PROBES