

Insertion Tool

BIT-BCP-690 M-550

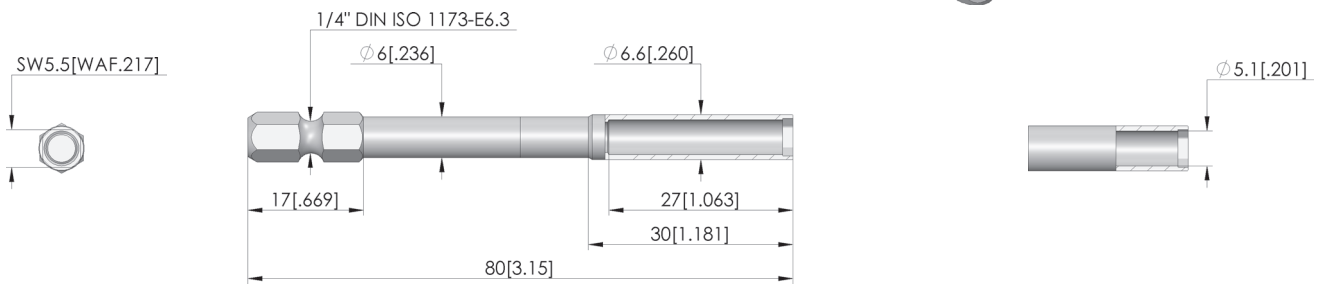
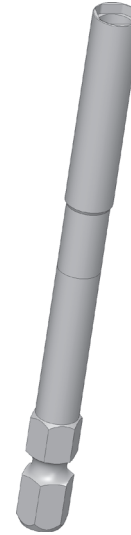
Item BIT-0015



ingun[®]

Partner for Future Technology

NEW



General data

Screw-in torque max.:	40 cNm [3.54 lbf-in]
Product group:	Bit inserts (BIT)
Compatible test probe(s) / receptacle(s):	078 BCP-690
Series:	BIT-BCP
Tool for receptacle (KS):	No
Tool for test probe (GKS):	Yes
Test probe installation type:	Screw-in
Min. tip diameter:	0 mm [0 in]
Max. tip diameter:	5 mm [.196 in]
Tool version:	Rigid
Screw-in torque:	40 cNm [3.54 lbf-in]
RoHS-compliant:	Yes

Insertion Tool

BIT-BCP-690 M-550

Item BIT-0015



GO TO PRODUCT

ingun[®]

Partner for Future Technology

Test probes

Part no.	Designation	Version
BCP-690-0003	BCP-690 360 500 A 10002 M5	Battery contacting probe
BCP-690-0004	BCP-690 360 500 A 10002 M5 DM3	Battery contacting probe

Tool

Part no.	Designation	Version
DW-5-40	DW-5-40	Insertion Tool

INGUN Prüfmittelbau GmbH

Max-Stromeyer-Straße 162
78467, Constance, Germany
Phone +49 7531 8105-0
Customer hotline +49 7531 8105-888
Fax +49 7531 8105-65
info@ingun.com



Prices and delivery times on request.
Technical changes reserved. 05/26_GB

Learn more about
Tool



ingun.com