

Transfer field

TF-P-SI-010-WW

Item 48733



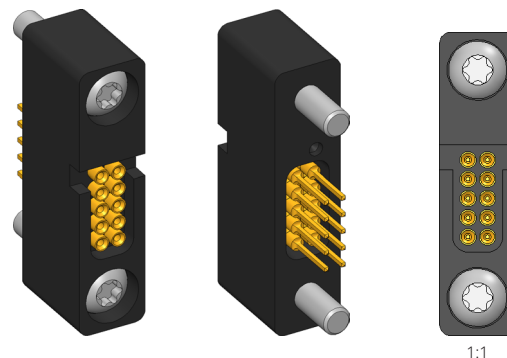
ingun[®]

Partner for Future Technology

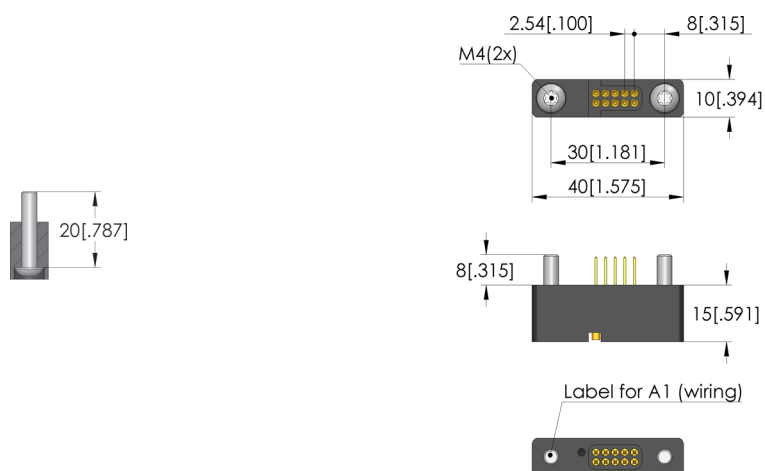
- Contact module for reliable transmission of signals when contacting from the top side
- Quick, easy, freely adjustable installation
- Equipped with INGUN contact terminals

Application

Transfer fields (TF) are used as contact modules to reliably transmit signals from top-side contacting. The signal transfer is spring-loaded, with the advantage that the exchangeable kit can be exchanged quickly and easily in interchangeable kit test fixtures without having to disconnect the wiring to the DUT. Transfer fields are typically mounted on the pressure-frame plate.



1:1



General data

Product group:
Series:
Type:
Version:
Accessory type:
Scope of delivery:
Width:
Height:
Weight:
Min. temperature:
Max. temperature:
RoHS-compliant:

Transfer fields
TF-SI
Device under test (DUT) side
Customising accessories
Fully loaded with KT-254 W3 E02
10 mm [.393 in]
15 mm [.59 in]
0.02 kg [.044 lbs]
10 °C [50 °F]
60 °C [140 °F]
Yes

Compatible with

Exchangeable kits version:
MA exchangeable kits (ATS MA):
For dual-stage contacting:

No limitations
ATS MAxx
Yes

Technical data

Connection:
Number of poles:
Installation grid:
Length:
Outer dimensionS (WxDxH):

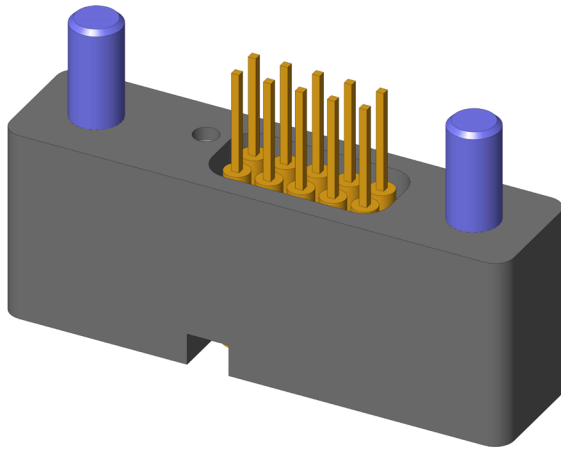
Wire-wrap posts
10
2.54 mm [.1 in]
40 mm [1.57 in]
40 x 10 x 15 mm [1.57 x .393 x .59 in]

Transfer field
TF-P-SI-010-WW

Item 48733



ingun[®]
Partner for Future Technology



INGUN Prüfmittelbau GmbH

Max-Stromeyer-Straße 162
78467, Constance, Germany
Phone +49 7531 8105-0
Customer hotline +49 7531 8105-888
Fax +49 7531 8105-65
info@ingun.com



Prices and delivery times on request.
Technical changes reserved. 11/25_GB