

Manual test fixture

MA 360/F

Item 45650

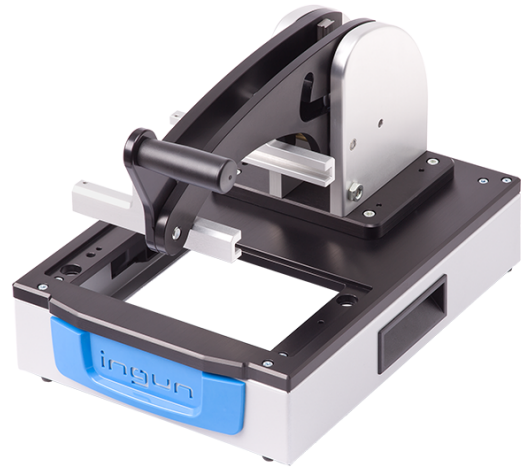


ingun[®]

Partner for Future Technology

- Manual test fixtures with parallel closing drive mechanism for testing small PCB quantities with the highest quality and precision
- Interchangeable set of test fixtures without preconfigured test system interface
- Exchangeable kits in standard and ESD versions, which can be installed without tools and used without readjustment
- Individually configurable signal transmission with VG multi-point connectors can be detached quickly
- Detailed accompanying documents (e.g., customising guidelines)

INGUN SELECTION



MANUAL TEST FIXTURE

Manual test fixture

MA 360/F

Item 45650



GO TO PRODUCT

ingun[®]

Partner for Future Technology

General data

Test system interface:	Not pre-wired
Product group:	Manual test fixtures (MA)
Main series:	MA xxx
Subseries:	MA 3xx
Series:	MA 360
Size:	360
Test fixture type:	Exchangeable test fixture
Contact stroke generation:	Manual
Housing type:	Flat housing
Max. interface signals:	150
Interface blocks required:	No
Max. internal interface blocks:	0
Contacting direction:	Double-sided (top/bottom)
Max. contact force:	300 N [1,079 ozf]
Approx. parallel contact stroke:	20 mm [.787 in]
Weight:	4.89 kg [10.7 lbs]
Min. temperature:	10 °C [50 °F]
Max. temperature:	60 °C [140 °F]
Low voltage:	No
ESD-compliant:	<p>Yes, with compatible exchangeable kit</p>
RoHS-compliant:	Yes

Technical data

Test probe installation height, top:	16 mm [.629 in]
Test probe installation height, bottom:	10.5 mm [.413 in]
Free space above PCB:	58 mm [2.28 in]
Free access (DxH):	120 x 150 mm [4.72 x 5.9 in]
Force of gas pressure springs:	100 N
Permissible test voltage:	25VAC/60VDC
Pressure frame opening angle:	65 °
Standard version:	<p>Yes, with compatible exchangeable kit</p>
Useable area, standard (WxD):	160 x 100 mm [6.29 x 3.93 in]
ESD version:	<p>Yes, with compatible exchangeable kit</p>
Useable area, ESD (WxD):	160 x 100 mm [6.29 x 3.93 in]
Radio frequency version:	No
Rigid pin version:	No
Dual-stage version:	No
Additional contacting unit (ZSK), top:	Yes, with suitable additional option
Outer dimensions, open (WxDxH):	230 x 330 x 381 mm [9.05 x 12.9 x 15 in]
Outer dimensions, closed (WxDxH):	230 x 365 x 251 mm [9.05 x 14.3 x 9.88 in]

INGUN Prüfmittelbau GmbH

Max-Stromeyer-Straße 162
78467, Constance, Germany
Phone +49 7531 8105-0
Customer hotline +49 7531 8105-888
Fax +49 7531 8105-65
info@ingun.com



Prices and delivery times on request.
Technical changes reserved. 11/25_GB

Learn more about
Manual test fixtures (MA)



ingun.com