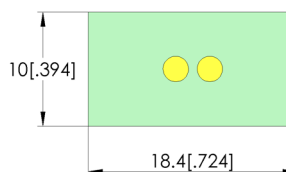
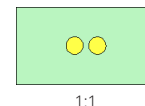
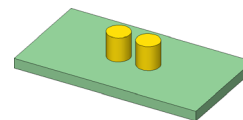
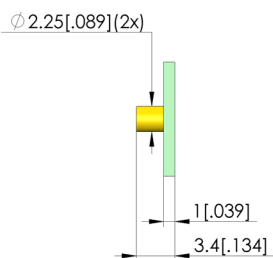




- Component for the Opens test, for capacitive testing of semiconductor chips for open circuits, short circuits and soldering faults
- Suitable for SPEA test systems

Application

The OpenPin Check sensor plate is used for capacitive testing of integrated circuits to check the wire-bonded connections inside an integrated circuit for open circuits, short circuits and soldering faults.



General data

Product group:	Opens tests
Series:	OTC
Type:	SPEA opens test
Version:	Open Pin check
Accessory type:	Customising accessories
Scope of delivery:	Sensor plate Escan Captor16
Width:	10 mm [.393 in]
Height:	3.4 mm [.133 in]
Weight:	0.01 kg [.022 lbs]
Min. temperature:	10 °C [50 °F]
Max. temperature:	60 °C [140 °F]
RoHS-compliant:	Yes

Compatible with

Interchangeable kits (WS):

WS SPEA

Technical data

Length: 18.4 mm [.724 in]
 Outer dimensionS (WxDxH): 10 x 18.4 x 3.4 mm [.393 x .724 x .133 in]

INGUN Prüfmittelbau GmbH

Max-Stromeyer-Straße 162
 78467, Constance, Germany
 Phone +49 7531 8105-0
 Customer hotline +49 7531 8105-888
 Fax +49 7531 8105-65
 info@ingun.com

