

Receptacle

KS-366 23

Item KS-36623

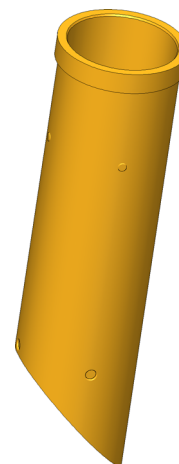


GO TO PRODUCT

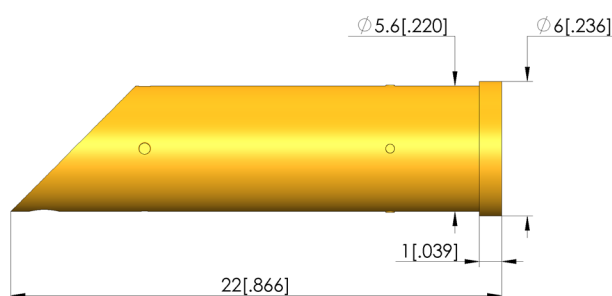
ingun[®]

Partner for Future Technology

INGUN SELECTION



1:1



General data

Product group: Receptacles (KS)
Series: KS-366
Sub-series: KS-366 press-in version
Type of receptacle connection: Solder / open
Press ring: No
Surface area: Gold
Collar diameter: 6 mm [.236 in]
Collar height: 1 mm [.039 in]
Knurl: No
Vacuum-tight: No
RoHS-compliant: Yes

Mechanical data

Total length: 22 mm [.866 in]
Outer diameter: 5.6 mm [.22 in]

Mounting hole

Mounting hole in CEM1: 5.59 – 5.6 mm [.22 – .22 in]
Mounting hole in FR4: 5.59 – 5.6 mm [.22 – .22 in]

INGUN Prüfmittelbau GmbH

Max-Stromeyer-Straße 162
78467, Constance, Germany
Phone +49 7531 8105-0
Customer hotline +49 7531 8105-888
Fax +49 7531 8105-65
info@ingun.com



Prices and delivery times on request.
Technical changes reserved. 03/26_GB

Learn more about
Test probes

