

# Side approach mechanism SAM-M-20-150N-070-063

Item 41070



GO TO PRODUCT

**ingun**<sup>®</sup>

Partner for Future Technology

- Reliable lateral contacting
- Compact, robust design
- Durable, maintenance-free precision guidance
- Space-saving, simple, and precise installation
- Manual actuation

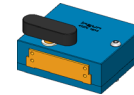
**INGUN SELECTION**

## Application

Side approach mechanisms (SAM) are provided for the reliable contacting of electronic components on printed circuit boards (PCBs) which require a lateral contact stroke movement.

## Confirmation

Activation is manual, and is achieved by turning the activation lever approximately 90° in a clockwise direction.

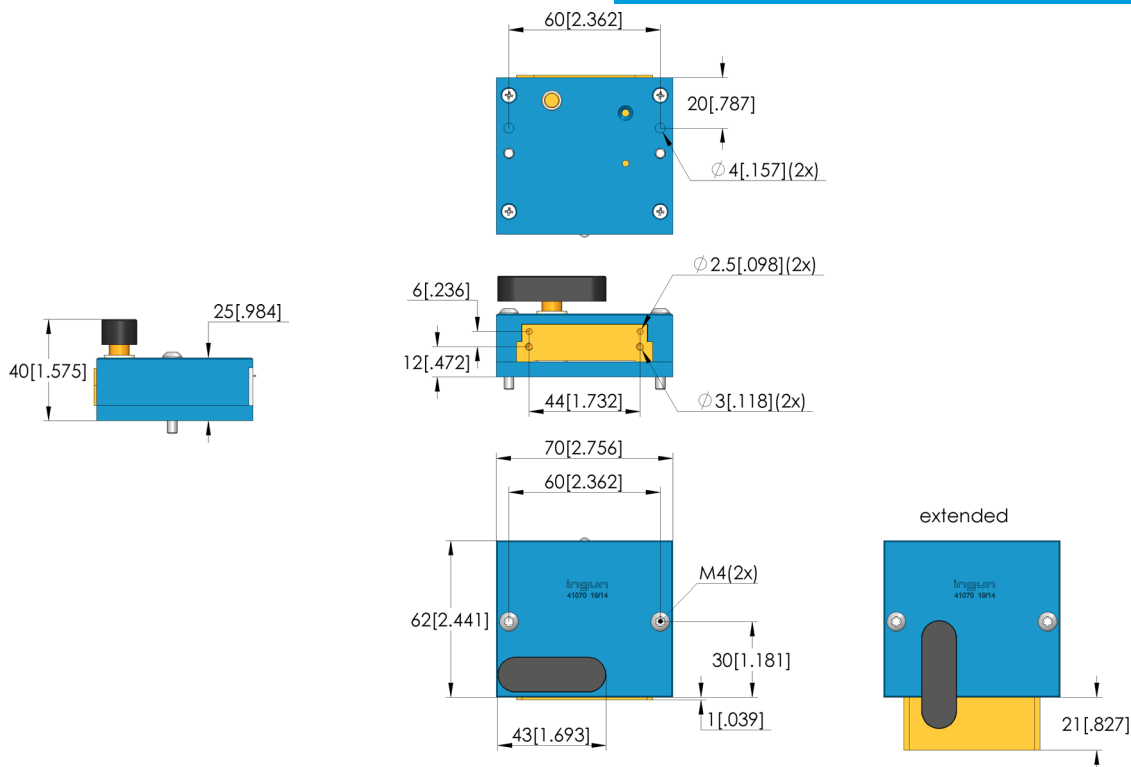


## Function

The manual side approach mechanism is used to ensure contact via a forward pressing motion. It is mounted on the pressure plate. The end position of the stroke mechanism is sensed via an optionally available contact stroke sensing device. After actuation, the stroke mechanism remains in a stable end position.

### Note:

The surface of the stroke bar can be oiled sparingly if required.



## General data

Product group:  
Series:  
Accessory type:  
Contact stroke generation:  
Weight:  
Min. temperature:  
Max. temperature:

Side approach mechanism (SAM)  
SAM-M  
Customising accessories  
Manual  
0.41 kg [0.903 lbs]  
-5 °C [23 °F]  
60 °C [140 °F]

## Compatible with

Manual test fixtures (MA):  
Pneumatic test fixtures (PA):  
Vacuum test fixtures (VA):  
MA exchangeable kits (ATS MA):

MA 20xx  
PA xxxx  
VA xxxx  
ATS MAxx

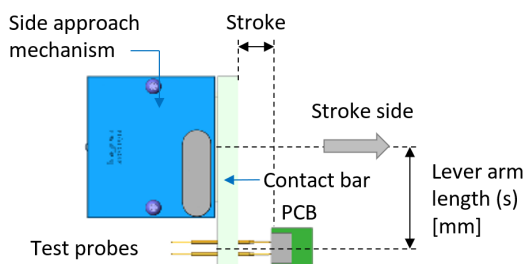


### Technical data

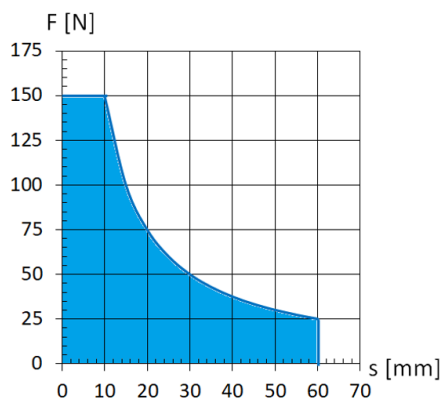
Max. contact stroke force:	150 N [539 ozf]
Max. contact stroke:	20 mm [.787 in]
Contact stroke detection:	Proximity switch, with compatible accessories
Max. lever arm length:	60 mm [2.36 in]
Max. torque:	1.5 Nm [13.2 lbf-in]
Outer dimensionS (WxDxH):	70 x 63 x 40 mm [2.75 x 2.48 x 1.57 in]



### Function: Contacting pressing forwards



### Permitted load



### Accessories

Part no.	Designation	Version
45790	FB-ABF-E-M-SAM-M	Contact stroke detection incl. proximity switch, ring magnet and mounting screw

### INGUN Prüfmittelbau GmbH

Max-Stromeyer-Straße 162  
 78467, Constance, Germany  
 Phone +49 7531 8105-0  
 Customer hotline +49 7531 8105-888  
 Fax +49 7531 8105-65  
 info@ingun.com

