

# Push rod

## NHS-ST-60,0-6,0-PA-AL

Item 18870



GO TO PRODUCT

**ingun**<sup>®</sup>

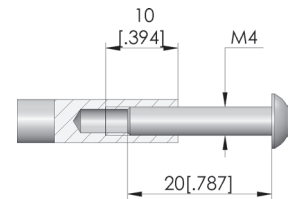
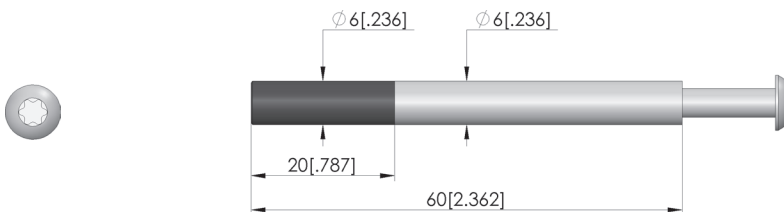
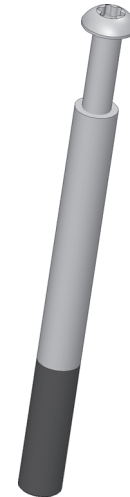
Partner for Future Technology

- Trusted push rods for reliable, rigid fixing of the PCB in the probe field against the force of the test probes
- Robust, pressure-resistant design
- Quick, easy installation

### Application

Push rods (NHS) are used in customisations to securely hold electronic circuit boards in place against the force of the test probes during contacting in the test fixture. Push rods are mounted in the pressure frame plate.

### INGUN SELECTION



### General data

Product group: Push rods (NHS)  
Series: NHS-ST  
Type: Rigid  
Version: Not ESD compliant  
Accessory type: Customising accessories  
Outer dimensions (TxL): 6 x 60 mm [0.236 x 2.36 in]  
Colour: Untreated  
RoHS-compliant: Yes

### Mechanical data

Total length: 60 mm [2.36 in]

### Compatible with

Exchangeable kits version:  
Manual test fixtures (MA):  
MA exchangeable kits (ATS MA):

ESD  
MA 20xx  
ATS MAxx

### Technical data

Tip diameter: 6 mm [0.236 in]  
Pushrod shaft diameter: 6 mm [0.236 in]  
Tip material: PA  
Shaft material: AL  
True running:  
Installation: Screwed in  
Thread: M4x10 mm  
Tip length: 20 mm [0.787 in]

### INGUN Prüfmittelbau GmbH

Max-Stromeyer-Straße 162  
78467, Constance, Germany  
Phone +49 7531 8105-0  
Customer hotline +49 7531 8105-888  
Fax +49 7531 8105-65  
info@ingun.com



Prices and delivery times on request.  
Technical changes reserved. 11/25\_GB