

# Interface support

## SSA-PYLON-12-VA4030

Item 113591



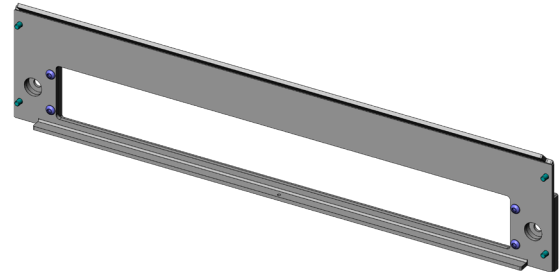
**ingun**<sup>®</sup>

Partner for Future Technology

- Interface support für INGUN Pylon interface
- Ideally designed for VA 4030 test fixtures
- Quick, easy installation on the back of the test fixture
- Reliable connection from test fixture to system interface

### Application

The interface frame (SSA) is used for reliable connection of the interface (SST) to the test fixture.



### General data

Product group:

Series:

Type:

Version:

Accessory type:

Scope of delivery:

Width:

Height:

Weight:

Min. temperature:

Max. temperature:

RoHS-compliant:

Housing

SSA-VAXxxx

Pylon 12

VA 4030

Additional function

Unassembled

18 mm [.708 in]

103 mm [4.05 in]

0.45 kg [.992 lbs]

10 °C [50 °F]

60 °C [140 °F]

Yes

### Compatible with

Vacuum test fixtures (VA):

Accessories:

VA 4030

SST-PYLON-12

### Technical data

Length:

456 mm [17.9 in]

Outer dimensionS (WxDxH): 456 x 18 x 103 mm [17.9 x .708 x 4.05 in]

### INGUN Prüfmittelbau GmbH

Max-Stromeyer-Straße 162

78467, Constance, Germany

Phone +49 7531 8105-0

Customer hotline +49 7531 8105-888

Fax +49 7531 8105-65

info@ingun.com



Prices and delivery times on request.  
Technical changes reserved. 11/25\_GB

Learn more about  
Test fixture kits

