

Rear panel unit

RWE MAxx14

Item 114921



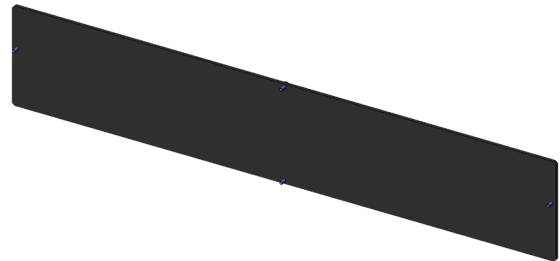
GO TO PRODUCT

ingun[®]

Partner for Future Technology

Application

Rear panel including installation accessories for manual test fixtures MA xxxx for modular test fixture configuration.



General data

Product group:	Housing
Series:	RWE-MAxxxx
Type:	MA xx14
Accessory type:	Additional function
Scope of delivery:	Unassembled
Material:	Adaptonit 105-AS
Width:	700 mm [27.5 in]
Height:	128 mm [5.03 in]
Weight:	0.65 kg [1.43 lbs]
Min. temperature:	10 °C [50 °F]
Max. temperature:	60 °C [140 °F]
RoHS-compliant:	Yes

Compatible with

Manual test fixtures (MA): MA xx14

Technical data

Length: 4 mm [.157 in]
Outer dimensionS (WxDxH): 700 x 4 x 128 mm [27.5 x .157 x 5.03 in]

INGUN Prüfmittelbau GmbH

Max-Stromeyer-Straße 162
78467, Constance, Germany
Phone +49 7531 8105-0
Customer hotline +49 7531 8105-888
Fax +49 7531 8105-65
info@ingun.com



Prices and delivery times on request.
Technical changes reserved. 03/26_GB

Learn more about
Test fixture kits

