

# Manual test fixture

## MA 3214/D/H/S-10

Item 43960



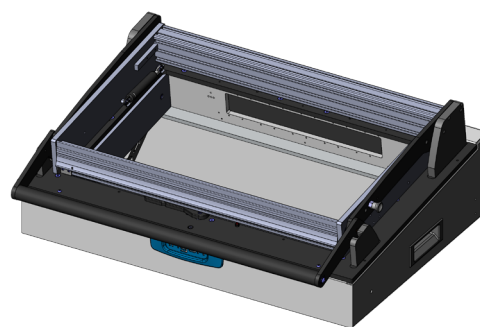
GO TO PRODUCT

**ingun**<sup>®</sup>

Partner for Future Technology

### INGUN SELECTION

- Manual test fixtures with parallel closing drive mechanism for testing large PCB quantities with the highest quality and precision
- Ultra-robust long-life test fixture with increased parallel stroke of 21 mm
- Interchangeable set of test fixtures without preconfigured test system interface
- Standard, ESD, and RF exchangeable kits that can be installed without tools and used without readjustment
- Modularly configurable signal transmission using interface blocks, which can be quickly detached
- Detailed accompanying documents (e.g., customising guidelines)
- Maximum opening angle may vary due to the length tolerance of +/- 2 mm of the gas spring



#### Note:

By replacing the gas springs, an additional weight of 3 kg can be loaded onto the pressure frame for every 100 N increase.

#### General data

Test system interface:	Not pre-wired
Product group:	Manual test fixtures (MA)
Main series:	MA xxxx
Subseries:	MA 32xx
Series:	MA 3214
Size:	xx14
Test fixture type:	Exchangeable test fixture
Contact stroke generation:	Manual
Housing type:	Desk housing
Max. interface signals:	1700
Interface blocks required:	Test system side
Max. internal interface blocks:	10
Contacting direction:	Double-sided (top/bottom)
Max. contact force:	2,000 N [7,193 ozf]
Approx. parallel contact stroke:	22 mm [.866 in]
Weight:	19 kg [41.8 lbs]
Min. temperature:	10 °C [50 °F]
Max. temperature:	60 °C [140 °F]
Low voltage:	Yes, with suitable additional option
ESD-compliant:	<p>Yes, with compatible exchangeable kit</p>
RoHS-compliant:	Yes

#### Technical data

Test probe installation height, top:	16 mm [.629 in]
Test probe installation height, bottom:	10.5 mm [.413 in]
Test probe installation height, dual-stage, bottom:	16 mm [.629 in]
Free space above PCB:	58 mm [2.28 in]
Force of gas pressure springs:	500 N (L: 200 N / R: 300 N)
Pressure frame opening angle:	69 °
Standard version:	<p>Yes, with compatible exchangeable kit</p>
Useable area, standard (WxD):	540 x 310 mm [21.2 x 12.2 in]
ESD version:	<p>Yes, with compatible exchangeable kit</p>
Useable area, ESD (WxD):	540 x 310 mm [21.2 x 12.2 in]
Radio frequency version:	No
Rigid pin version:	No
Dual-stage version:	<p>Yes, with compatible additional option</p>
Useable area, dual-stage (WxD):	540 x 310 mm [21.2 x 12.2 in]
Additional contacting unit (ZSK), top:	Yes, with suitable additional option
Outer dimensions, open (WxDxH):	748 x 533 x 670 mm [29.4 x 20.9 x 26.3 in]
Outer dimensions, closed (WxDxH):	746 x 603 x 270 mm [29.3 x 23.7 x 10.6 in]

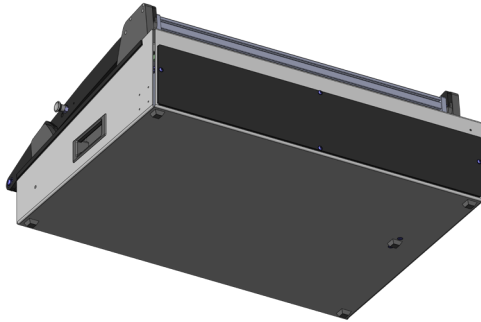
# Manual test fixture **MA 3214/D/H/S-10**

Item 43960



**ingun**<sup>®</sup>

Partner for Future Technology



## **INGUN** Prüfmittelbau GmbH

Max-Stromeyer-Straße 162  
78467, Constance, Germany  
Phone +49 7531 8105-0  
Customer hotline +49 7531 8105-888  
Fax +49 7531 8105-65  
[info@ingun.com](mailto:info@ingun.com)



Prices and delivery times on request.  
Technical changes reserved. 11/25\_GB

Learn more about  
**Manual test fixtures (MA)**



[ingun.com](https://www.ingun.com)

MANUAL TEST FIXTURE