

# Receptacle

## KS-626 M6 M6-RF

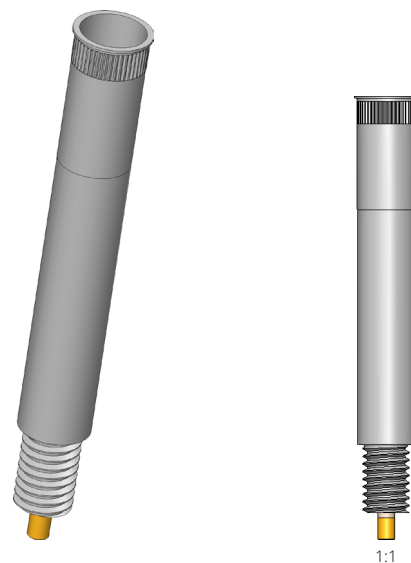
Item KS-626M6M6-RF



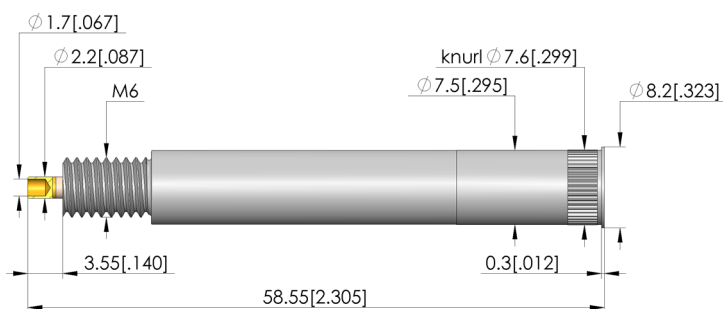
GO TO PRODUCT

**ingun**<sup>®</sup>

Partner for Future Technology



1:1



### General data

Product group:  
Series:  
Sub-series:  
Type of receptacle connection:  
Press ring:  
Surface area:  
Collar diameter:  
Collar height:  
Knurl:  
Vacuum-tight:  
RoHS-compliant:

Receptacles (KS)  
KS-626  
Plug / open  
No  
Gold  
8.2 mm [0.322 in]  
0.3 mm [0.011 in]  
Yes  
No  
Yes

### Wiring data

Insulating material:

PEEK

### Mechanical data

Total length:  
Outer diameter:

58.5 mm [2.3 in]  
7.5 mm [0.295 in]

### Mounting hole

Mounting hole in CEM1:  
Mounting hole in FR4:

7.5 – 7.52 mm [0.295 – 0.296 in]  
7.5 – 7.52 mm [0.295 – 0.296 in]

### INGUN Prüfmittelbau GmbH

Max-Stromeyer-Straße 162  
78467, Constance, Germany  
Phone +49 7531 8105-0  
Customer hotline +49 7531 8105-888  
Fax +49 7531 8105-65  
info@ingun.com



Prices and delivery times on request.  
Technical changes reserved. 04/26\_GB

Learn more about  
Test probes

