

Receptacle

KS-365 125

Item KS-365125



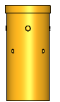
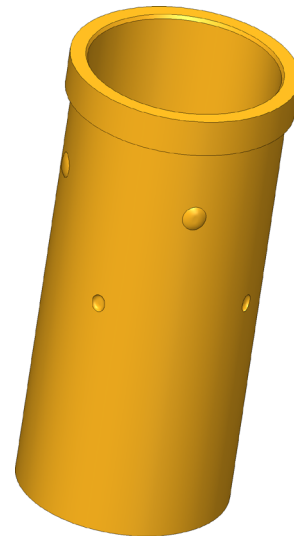
GO TO PRODUCT

ingun[®]

Partner for Future Technology

INGUN SELECTION

Text-block



1:1

Receptacle

KS-365 125

Item KS-365125



ingun[®]

Partner for Future Technology

General data

Product group:	Receptacles (KS)
Series:	KS-365
Sub-series:	KS-365 press-in version
Type of receptacle connection:	Solder outer surface
Press ring:	No
Surface area:	Gold
Collar diameter:	6 mm [.236 in]
Collar height:	1 mm [.039 in]
Knurl:	No
Vacuum-tight:	No
RoHS-compliant:	Yes

Mechanical data

Total length:	12.5 mm [.492 in]
Outer diameter:	5.6 mm [.22 in]

Mounting hole

Mounting hole in CEM1:	5.59 – 5.6 mm [.22 – .22 in]
Mounting hole in FR4:	5.59 – 5.6 mm [.22 – .22 in]

INGUN Prüfmittelbau GmbH

Max-Stromeyer-Straße 162
78467, Constance, Germany
Phone +49 7531 8105-0
Customer hotline +49 7531 8105-888
Fax +49 7531 8105-65
info@ingun.com



Prices and delivery times on request.
Technical changes reserved. 03/26_GB

Learn more about
Test probes

